



**Alzheimer's  
Drug Discovery  
Foundation**

# **Conquering Alzheimer's Through Drug Discovery**

**Annual Report 2012**

the 1990s, the number of people with a mental health problem has increased in the UK (Mental Health Act 1983, 1990).

There is a growing awareness of the need to improve the lives of people with mental health problems. The Department of Health (1999) has set out a strategy for mental health care in the UK. The strategy is based on the following principles:

- People with mental health problems should be treated as individuals.
- People with mental health problems should be given the opportunity to participate in decisions about their care.
- People with mental health problems should be given the opportunity to live in their own homes.

The strategy also states that people with mental health problems should be given the opportunity to live in their own homes.

The strategy also states that people with mental health problems should be given the opportunity to live in their own homes. This is a key principle of the strategy and is reflected in the following text:

- People with mental health problems should be given the opportunity to live in their own homes.
- People with mental health problems should be given the opportunity to live in their own homes.

The strategy also states that people with mental health problems should be given the opportunity to live in their own homes.

The strategy also states that people with mental health problems should be given the opportunity to live in their own homes. This is a key principle of the strategy and is reflected in the following text:

- People with mental health problems should be given the opportunity to live in their own homes.
- People with mental health problems should be given the opportunity to live in their own homes.

The strategy also states that people with mental health problems should be given the opportunity to live in their own homes.

The strategy also states that people with mental health problems should be given the opportunity to live in their own homes. This is a key principle of the strategy and is reflected in the following text:

- People with mental health problems should be given the opportunity to live in their own homes.
- People with mental health problems should be given the opportunity to live in their own homes.

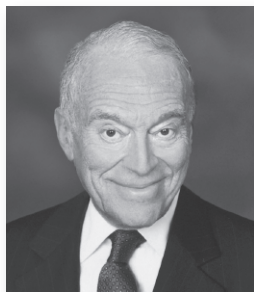
# Drug discovery matters.

Millions of people worldwide suffer from Alzheimer's and related dementias, without hope of survival. But there is *hope* in drug discovery.

The ADDF is committed to pursuing the most promising research to find effective treatments that can be brought quickly to patients.

100% of your donation goes directly to Alzheimer's drug research and related programs. With your help, we can and will understand, treat, prevent and conquer this disease.

With my deepest thanks,



A handwritten signature in blue ink that reads "Leonard A. Lauder". The signature is fluid and cursive.

Leonard A. Lauder  
Co-Chairman

## Mission

The mission of the Alzheimer's Drug Discovery Foundation (ADDF) is to rapidly accelerate the discovery of drugs to prevent, treat and cure Alzheimer's disease, related dementias and cognitive aging.

## Approach

Founded in 1998 by co-chairmen Leonard A. and Ronald S. Lauder of the Estée Lauder cosmetics family, the ADDF provides funding to leading scientists who are conducting the most promising, innovative Alzheimer's drug research worldwide.

Our goal is to provide seed funding for early-stage drug research that may otherwise go unfunded. By supporting cutting edge, diverse, novel research projects around the globe, we increase the chance of finding a cure.

**100% of your donation goes directly to Alzheimer's drug research and related programs.** All of the ADDF's administrative and overhead costs are covered by a private foundation.

Many of the ADDF's grants are structured as investments, providing a return that is reinvested in new drug research.

## Impact

The ADDF has invested nearly \$60 million to fund over 400 Alzheimer's drug discovery programs and clinical trials in academic centers and biotechnology companies in 18 countries.

## A Letter from Dr. Howard Fillit and Nancy Lynn

Thanks to your support and generosity, 2012 was a year of significant growth for the Alzheimer's Drug Discovery Foundation:

- We raised \$9.2 million for research towards finding a cure, funding 37 scientific grants worldwide. One hundred percent of your contributions went directly to fund Alzheimer's drug discovery and related programs.
- The U.S. Food and Drug Administration (FDA) approved Amyvid™, the first diagnostic test for Alzheimer's and other causes of cognitive decline. ADDF provided the critical seed funding needed to launch the test's early development.
- The *ADDF/Belfer ApoE Therapeutics Innovation Program* funded 3 projects to develop new drugs targeting Apolipoprotein E — a significant genetic risk factor for Alzheimer's.
- We funded 6 human clinical studies via our *Program to Accelerate Clinical Trials (PACT)*, with special thanks to major support from Nancy and Mel Goodes, The Charles Evans Foundation and The W. Garfield Weston Foundation.
- The National Institutes of Health (NIH) announced a \$7.9 million grant to Suzanne Craft, PhD, at the University of Washington for a five-year clinical trial to evaluate an insulin nasal spray in Alzheimer's patients. ADDF provided the critical early support for Dr. Craft's program leading to this extended study.
- We registered our first international affiliate, ADDF-Canada, to expand funding for promising clinical trials in Canada.
- We hosted 2 international scientific conferences and held several signature events across the country. Gala highlights included honoring Nancy Reagan and fashion designer Carolina Herrera at our *Great Ladies Luncheon and Fashion Show* in Washington, DC and hosting an inaugural *Hope on the Horizon Chicago Dinner* with a special performance by legendary singer and guitarist Glen Campbell and his family.

There has never been a greater need for the ADDF. We received over 400 requests for funding new drugs from academic scientists and biotechnology companies across the world in 2012, up almost 40% from 2011.

Thank you for your continued commitment — with your help, we can move quickly towards conquering this disease.



*Howard*  
Howard Fillit, MD  
Executive Director and  
Chief Science Officer



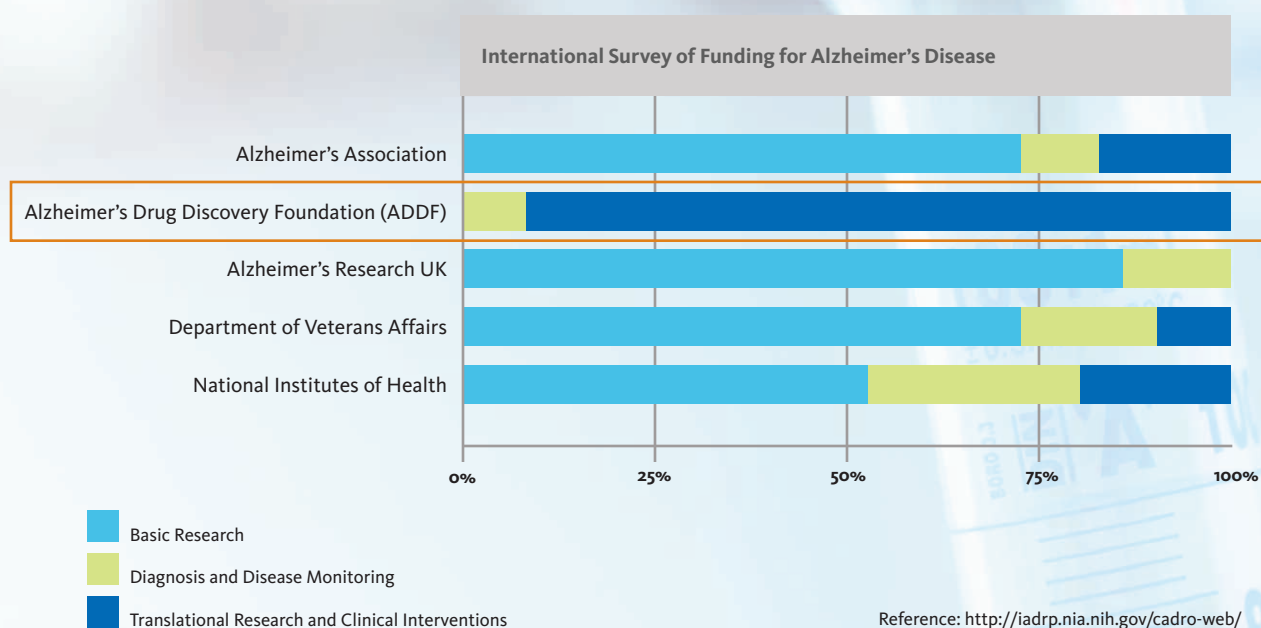
*Nancy Lynn*  
Nancy Lynn  
Executive Director and  
Chief Operating Officer

## Promise Through Drugs

The ADDF is committed to investing in a diverse portfolio of research programs and strengthening our network of partnerships until we discover a cure.

The ADDF focuses its funding entirely on preclinical drug discovery research and early-stage clinical trials involving new drug targets that hold great promise but may not be far enough along in the drug development pipeline to receive financial support from the pharmaceutical industry, investors or other partners. The ADDF bridges this critical gap in funding between basic research and later stage drug development, enabling the scientific pursuit of many innovative and novel therapies that might otherwise go unexplored.

### ADDF's focus on drug discovery is unique.



### Our Funding Model — Venture Philanthropy

The ADDF is a biomedical venture philanthropy. Most of our grants are structured as mission-related investments, providing a return that is reinvested in new drug research. From more than \$14 million invested in biotechnology programs, \$2.8 million has been returned to date and immediately reinvested in new drug research programs. Subsequent to the ADDF's initial funding, our grantees have received commitments of over \$2 billion in follow-on funding from government, pharmaceutical companies and venture capital firms to further advance their drug research.

**100% of your donation goes directly to Alzheimer's drug research and related programs.**

## Where We Fund

The ADDF supports the most promising and diverse research projects around the world.



# ADDF Drugs in the Pipeline

The ADDF has granted nearly \$60 million to fund over 400 Alzheimer's drug discovery programs and clinical trials in academic centers and at biotechnology companies in 18 countries. Below, we highlight select programs, grouped by therapeutic category.



Therapeutic Target	Preclinical			Clinical			FDA Approval
	Screening/Chemistry	Animal Studies	IND-Enabling	Phase I	Phase II	Phase III	
<b>AMYLOID</b>							
Prana Biotechnology*							PBT <sub>2</sub>
Zapaq, Inc./Comentis*				Astellas			β-secretase Inhibitor
Tel Aviv University	Neurophage			NPT001			
Cognition Therapeutics*	PI			Aβ blockers			
<b>TAU</b>							
Simon Fraser University	Alectos, MERCK			O-glcNAcase modulators			
New York University	NIH			Tau immunotherapy			
Yuma Therapeutics*	NIH			HSP90 Inhibitors			
Duke University				Proteasome Activators			
<b>NEUROPROTECTION</b>							
Rockefeller University							Riluzole
Emory University							Atomoxetine (Strattera®)
University of California, San Diego				Ceregene			NGF gene therapy
Pharmatropix*				NIH			NGF mimetics
University of California, Irvine				NIH			Allopregnanalone
Northwestern University							Neuroinflammation blockers
Boston University							Klotho activators
AgeneBio*	PI						GABA α5 ligands
<b>APOE &amp; VASCULAR</b>							
University of Toronto							Angiotensin Receptor Blockers
ReXceptor*							Bexarotene (co-funded by Bright Focus and Case Western)
Duke University				Cognosci			ApoE3 mimetic
Weill Cornell							ApoE gene therapy
Madera*							ApoE inducers
<b>ENERGY UTILIZATION</b>							
Seattle Institute							NIH
Imperial College London							Intranasal Insulin
Metabolic Solutions*							Liraglutide (co-funded by Alzheimer's Society, UK; in-kind support from NovoNordisk and GE)
Mayo Clinic							Mitoglitazone
Mayo Clinic							Mitochondria protectors
<b>EARLY DETECTION &amp; DIAGNOSIS</b>							
University of Pennsylvania				Avid, LILLY			Florbetapir (Amyvid™)
Ohio State University							Tau imaging agents



## Spotlight on Amyvid

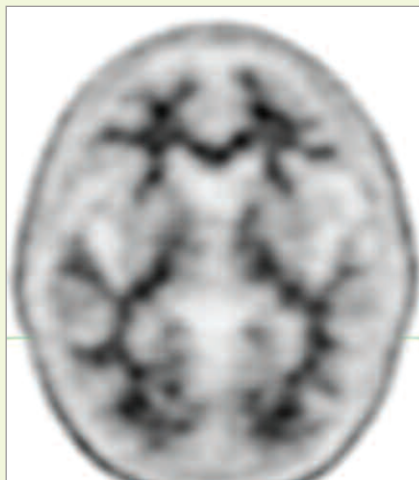
In 2012, the U.S. Food and Drug Administration (FDA) approved Amyvid™, the first diagnostic test for Alzheimer's disease. The ADDF provided crucial seed funding for the research of Amyvid from 2000-2004. This successful technology is an important proof-of-concept for the ADDF model, showcasing how early financial support for high-risk projects can lead to and accelerate the development of innovative drugs and diagnostics in Alzheimer's.



**“ADDF's research support and commitment has been critical to the development of amyloid imaging technology. These are important assets in both research and clinical settings to identify beta-amyloid plaques, a neuropathological feature of Alzheimer's disease.**

**Thanks to amyloid imaging agents like Amyvid and other related biomarkers, the field can now attempt prevention trials of Alzheimer's — trials conducted under large public-private partnerships — designed to test whether early detection and early intervention can actually prevent the onset of symptoms. We hope this area of research, enabled by early investment from the ADDF, provides answers for patients and their loved ones.”**

— Daniel Skovronsky, MD, PhD  
Founder and CEO, Avid Radiopharmaceuticals



Left: Amyvid Positive Scan. Moderate to frequent amyloid plaques are present, indicating a possible diagnosis of Alzheimer's or other cognitive diseases.

Right: Amyvid Negative Scan. Sparse to no amyloid plaques are present, indicating an unlikely diagnosis of Alzheimer's or other cognitive diseases.

*Brain scan images will appear blurry.*

## Select Current Programs and Partnerships

### Preclinical Drug Discovery

The ADDF's preclinical program funds research focused on translating the knowledge we have gained about the underlying causes of Alzheimer's disease into drugs. In 2012, 60% of our funding went towards preclinical drug discovery.



**Carmela R. Abraham, PhD**  
Boston University  
School of Medicine  
Boston, Massachusetts

Dr. Abraham and her team are developing compounds to increase Klotho expression, a "longevity" target, to prevent age-related cognitive decline and Alzheimer's disease. Interestingly, the gene Klotho is named after the Greek goddess who spins the thread of life.

### Biotechnology

The ADDF helps create new biotechnology companies and funds early stage biotechnology companies, with programs dedicated to Alzheimer's disease drug discovery. To date, the ADDF has funded almost 60 biotechnology programs.



**Lawrence Wennogle, PhD**  
Intra-Cellular Therapies, Inc.  
New York, New York

Dr. Wennogle's research aims to further test several drugs that inhibit the casein kinase I (CKI) protein, a protein involved in regulating sleep cycles and that could impact multiple aspects of the Alzheimer's disease process.

### Program to Accelerate Clinical Trials (PACT)

The ADDF's PACT supports the testing of promising drugs for Alzheimer's in humans, giving innovative programs the chance to generate important safety and "proof-of-concept" data. The ADDF has funded 29 clinical trials.



**Olga Meulenbroek, PhD**  
Radboud University  
Medical Centre  
Nijmegen, The Netherlands

Dr. Meulenbroek and her team are testing whether nilvadipine, a calcium channel blocker FDA approved for treating high blood pressure, can increase blood flow to the brain, improve blood pressure stability, and ultimately improve cognition in Alzheimer's patients.

## The ADDF/Belfer ApoE Therapeutics Innovation Program

The ADDF and the Robert A. and Renée E. Belfer Family Foundation established the ADDF/Belfer ApoE Therapeutics Innovation Program to accelerate the development of novel therapeutics specifically designed to target apolipoprotein E (ApoE), the most significant genetic risk factor for late-onset Alzheimer's. Eight projects have been funded through the program.



**Mary Jo LaDu, PhD**  
University of Illinois at Chicago  
Chicago, Illinois

Dr. LaDu's research aims to understand exactly how bexarotene, a cancer drug entering human testing, boosts ApoE levels and clears amyloid-beta protein. Results from this study will allow scientists to create more effective and safe ApoE-targeted drugs.

## ADDF-Canada

In 2012, the ADDF launched its first international affiliate, ADDF-Canada. ADDF-Canada will provide funding to Canadian academic institutions and medical centers engaged in drug discovery and clinical trials to advance the development of novel therapeutics and diagnostic tools for Alzheimer's disease, related dementias and cognitive aging.

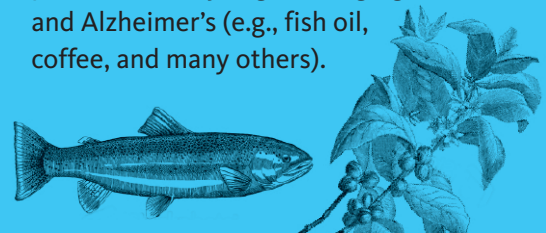


**Sandra Black, MD, FRCP(C)**  
Sunnybrook Research Institute  
University of Toronto  
Toronto, Canada

Dr. Black and her team are conducting a clinical trial to determine whether medication already being used to treat hypertension has the ability to protect against brain degeneration in people with or at risk for developing Alzheimer's.

## Aging and Alzheimer's Prevention Program

The mission of ADDF's Aging and Alzheimer's Prevention Program is to provide a credible independent scientific voice — for the public and the scientific community — that evaluates the evidence for pharmaceuticals, supplements and natural products that are claimed to prevent or delay cognitive aging and Alzheimer's (e.g., fish oil, coffee, and many others).



**“In today's challenging funding environment for scientific research, the awards I received from the ADDF were just what I needed as I was beginning to transition from basic research to drug development.”**

— Carmela R. Abraham, PhD

## Special Events

To broaden awareness and raise critical funds for Alzheimer’s drug research, the ADDF

### Second Annual Great Ladies Luncheon and Fashion Show

The Ritz-Carlton | Washington, DC  
May 2, 2012

*Executive Chairs*

Ronald Frasch  
Leonard A. Lauder  
Elise and Marc Lefkowitz

In partnership with Saks Fifth Avenue, the ADDF’s second annual Great Ladies Luncheon and Fashion Show raised \$270,000. Highlights included honoring former First Lady Nancy Reagan and a fashion presentation by designer Carolina Herrera.

Top and right: Dr. Howard Fillit, Nancy Lynn, Leonard A. Lauder, Andrea Mitchell. Norah O’Donnell, Carolina Herrera.



### Sixth Annual Connoisseur’s Dinner: To Live is to Think

Sotheby’s | New York, NY  
April 26, 2012

*Executive Chairs*

Leonard A. Lauder  
Nancy Corzine

The ADDF’s sixth annual Connoisseur’s Dinner raised \$1.5 million for scientific drug research for Alzheimer’s. Nancy and Mel Goodes were awarded the second annual Chairman’s Award, and Sotheby’s Chairman, Jamie Niven, conducted the annual “Fund a Scientist” live auction, raising a record \$447,900 onsite.



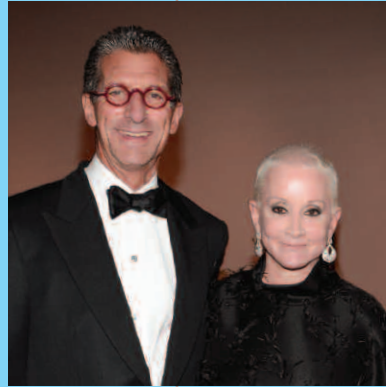
Clockwise from top left: Nancy and Mel Goodes. Nancy Corzine. Liz and Randal Sandler.

hosted five major special events.



**“My mother generously and selflessly gave her time and energy to the causes she believed in. When Alzheimer’s disease took her life, we searched for a long time to find the right organization to support in her memory. We found the ADF and decided to do all that we can to ensure that future families do not have to endure the heartbreak of losing a loved one to this terrible disease.”**

— Elise Gelman Lefkowitz



Left and above: Carolina Herrera model. Marc and Elise Lefkowitz.



### Aspen Dinner

Maroon Creek Club | Aspen, CO  
August 1, 2012

*Executive Chairs*  
Leonard Lauder  
Alison and Buzz Zaino

The ADF’s signature event in Aspen featured a keynote presentation by Dr. Fillit, remarks by filmmaker James Keach and actress Jane Seymour, and a special preview of Glen Campbell’s “Goodbye Tour” documentary. Campbell was diagnosed with Alzheimer’s in 2011.



Clockwise from top left: Laura Lauder, Leonard A. Lauder. Buzz and Alison Zaino. Dinner at the Maroon Creek Club.



**3rd Annual *Hope on the Horizon* Fall Luncheon & Symposium**

Metropolitan Club | New York, NY  
September 27, 2012

*Executive Chairs*

Leonard A. Lauder  
Sir Evelyn and Lady Lynn Forester de Rothschild  
Nancy and Mel Goodes

The ADDF's third annual Fall Luncheon & Symposium brought together more than 265 guests and raised nearly \$700,000 for Alzheimer's drug discovery research. The second annual Charles Evans Award was presented to Christopher Johnson, son of former New York Giants running back Ron Johnson who was diagnosed with Alzheimer's in 2008.

Clockwise from top left: Alice Shure, Christopher Johnson, Bonnie Pfeifer Evans. Dr. Steven J. Romano, Paula Zahn. The Honorable Christine Quinn, William Lauder. Robert and Renée Belfer.



**Inaugural *Hope on the Horizon* Chicago Dinner**

The Art Institute of Chicago | Chicago, IL  
November 5, 2012

*Executive Chairs*

Leonard A. Lauder  
Nancy and A. Steven Crown

The ADDF's inaugural *Hope on the Horizon* Chicago Dinner, hosted by award-winning actress Jane Seymour, brought together 265 guests and raised nearly \$1.5 million for Alzheimer's drug discovery research. Legendary guitarist and singer Glen Campbell performed selections from his "Goodbye Tour."



Top and left: Glen Campbell, Ashley Campbell. Eric Lefkofsky, Nancy Crown, Lester Crown.

## Conferences, Training and Resources

The ADDF's scientific conferences promote the exchange of ideas, the sharing of research results, and the formation of strategic alliances to further drug development goals.

### 6th Drug Discovery for Neurodegeneration Conference: An Intensive Course on Translating Research into Drugs

New York, NY | February 12-14, 2012

The ADDF's annual conference, planned in conjunction with the National Institutes of Health, attracted approximately 140 academic, industry and government scientists from around the world. Designed to advance the development of new drugs for neurodegenerative diseases, the conference educated scientists on the principles and practice of drug discovery.

### 13th International Conference on Alzheimer's Drug Discovery

Jersey City, NJ | September 10-11, 2012

This global conference, designed to accelerate the development of innovative treatments, attracted approximately 140 key stakeholders from the pharmaceutical, biotechnology, government and academic communities. The ADDF's funded investigators and top-level scientists in the field presented their current research and provided progress.

*The ADDF also hosted or exhibited at several other conferences in collaboration with other scientific institutions.*



ADDF's Science Team with young scholarship winners.

### ADDF ACCESS Program



Drug discovery is a team effort, requiring collaboration between scientists with many different types of experience, from biology to chemistry to pharmacology. To help scientists find access to the expertise they need, the ADDF established the ADDF ACCESS program in 2012. The program connects scientists with networks of collaborators, consultants, contract research organizations (CROs) and experimental tools. It provides Alzheimer's scientists with educational materials on the drug discovery process and guidance and expertise on the process of selecting and managing CRO relationships. For more information about the ADDF ACCESS Program, visit <http://www.alzdiscovery.org/research-and-grants/addf-access/>.

## Support Alzheimer's Research

Alzheimer's is a progressive, fatal neurodegenerative disease and the most common cause of dementia. There are currently no drugs available that prevent or even slow its course, but scientists are making measurable progress towards finding treatments.

In 2012, an estimated 5.4 million Americans suffered from Alzheimer's; by 2050, that number is expected to triple. With an aging population and increasing number of people with Alzheimer's, it is critical we continue to invest in research and discover a cure.

*There is hope in drug discovery.* With your support, we can and will understand, prevent and conquer this disease.

Please give generously today at [www.AlzDiscovery.org](http://www.AlzDiscovery.org)

100% of your donation goes directly to Alzheimer's drug research and related programs.



**There has never  
been a greater  
need for the  
ADDF.**



## 2012 Donors

### Over \$1,000,000

Anonymous  
The Robert A. and Renée E. Belfer Family Foundation  
The Charles Evans Foundation  
Mrs. Bonnie Pfeifer Evans, Co-Trustee  
Mrs. Alice Shure, Co-Trustee  
Mr. and Mrs. Melvin R. Goodes  
Evelyn H. Lauder Charitable Trust  
The W. Garfield Weston Foundation

### \$100,000 to \$999,999

The Association for Frontotemporal Degeneration  
BrightFocus Foundation  
The Charles River Laboratories  
Ms. Nancy Corzine  
The Estée Lauder Companies Inc.  
Mr. and Mrs. Nathan Kirsh  
Mr. Leonard A. Lauder  
The Leonard and Evelyn Lauder Foundation  
Mr. and Mrs. Marc Lefkowitz  
Lewy Body Dementia Association  
National Institutes of Health  
Mr. and Mrs. Randal B. Sandler

### \$50,000 to \$99,999

Anonymous  
Aetna Foundation  
Mr. and Mrs. David M. Baldwin  
The Bluhm Family Charitable Foundation  
Mr. and Mrs. A. Steven Crown  
Mr. and Mrs. James S. Crown  
Mr. and Mrs. Raymond Dalio  
Sir Evelyn and Lady Lynn Forester de Rothschild  
Leslie and Roslyn Goldstein Foundation  
Mr. and Mrs. Richard Goodman  
Mr. and Mrs. Jim Gordon,  
The Edgewater Funds  
Graff Diamonds  
Mr. and Mrs. Kenneth C. Griffin  
Ms. Dina Merrill Hartley and  
Mr. Ted Hartley  
Mrs. Bonnie Englehardt Lautenberg and  
Senator Frank Lautenberg  
The Lefkowsky Family Foundation  
Christy and John Mack Foundation  
Mr. and Mrs. Barry L. MacLean  
New York Academy of Sciences  
Mr. and Mrs. J.B. Pritzker

Mr. and Mrs. J. Christopher Reyes  
Mr. and Mrs. Andrew Rosenfield  
Mr. and Mrs. John W. Rowe  
Mr. and Mrs. Michael J. Sacks  
Mr. and Mrs. Gordon Segal  
Mr. and Mrs. Peter J. Solomon  
The Spiritus Gladius Foundation  
Tishman Speyer Properties, LP  
Mr. and Mrs. Byron D. Trott

### \$25,000 to \$49,999

Alzheimer's Foundation of America  
Mr. and Mrs. Jeffrey S. Aronin  
Bloomberg LP  
Ms. Carol Seabrook Boulanger  
Mr. and Mrs. John A. Canning  
Mr. and Mrs. James Cohen  
Ms. Francie Comer  
Condé Nast  
Mr. and Mrs. Howard Draft  
Mr. and Mrs. Mitchell Eichen  
Ernst & Young, LLP  
First Republic Bank  
The Samuel Freeman Charitable Trust  
Teaman and Grace Fuite Foundation  
Mr. Philip H. Geier, Jr.  
Mrs. Judy Glickman  
The Lauder Foundation  
Le Papillon Ltd. / Mr. Watson J. Warriner, Jr.  
Mr. and Mrs. Laurence C. Leeds, Jr.  
Lilly USA, LLC  
Mr. Philip Lovett  
Merck Research Laboratories  
The David A. and Mildred H. Morse Charitable Trust  
Northern Trust  
Mr. and Mrs. Thomas S. Ricketts  
Ms. Lois Robbins  
Mr. and Mrs. William C. Rudin  
Sotheby's  
Ms. Joan Sutton Straus  
Mr. and Mrs. Michael Weisman  
World Events Forum, Inc.  
Mr. and Mrs. Buzz Zaino

### \$10,000 to \$24,999

Abbott Laboratories  
Mr. and Mrs. Robert Baizer  
Baxter International Inc.,  
Mr. Robert L. Parkinson, Jr.

Mr. and Mrs. Philip J. Bazelides  
Mr. Howard Bernick  
Carol Lavin Bernick Family Foundation  
Mr. and Mrs. Daniel S. Bernstein  
Ms. Alecia Blake and Mr. Curtis Rudbart  
Mr. and Mrs. Robert S. Blank  
Bulley & Andrews, LLC  
Mr. Louis C. Camilleri  
Mr. and Mrs. Arthur Carter  
Mr. and Mrs. Marvin H. Davidson  
Mr. David Deckelbaum  
Mr. and Mrs. Charles M. Diker  
Elan Pharmaceuticals, Inc.  
Emory University  
Ms. Mary C. Farrell  
Frontenac Company, LLC  
Mr. Richard Gerson  
Mr. and Mrs. Henry Goldberg  
Mr. and Mrs. King W. Harris  
Ms. Marlene Hess and Mr. James D. Zirin  
Mr. Gregory Jones  
The Kaneff Foundation  
Mr. and Mrs. Michael Katzke  
Mr. and Mrs. Howard Kessler  
Mr. and Mrs. Lester Knight  
Mr. Dan Lufkin, The Peter Jay Sharp Foundation  
Ms. Michelle MacDonald  
Mr. William E. Mayer  
Mr. Samuel M. Menco  
Mr. and Mrs. William Miller  
Mr. and Mrs. Marc S. Moller  
Motorola Solutions, Inc.  
Pfizer Inc.  
Mr. Thomas Pheasant  
Mr. and Mrs. Michael Pierce  
PLVTZ GUC Trust, Mr. Jeffrey Cohen  
Mr. and Mrs. Robert Prince  
Ms. Lita Rosenberg  
Mr. and Mrs. Mortimer Sackler  
Ms. Sharon T. Sager and Mr. Loring Swasey,  
UBS Private Wealth  
Saks Fifth Avenue  
Mr. and Mrs. Nathan Sandler  
Mr. and Mrs. Paul C. Schorr III  
Anna and John J. Sie Foundation  
The Sun-Times Foundation  
Ms. Sally Susman, Pfizer Inc.  
Ms. Mary Rose Taylor  
Mr. and Mrs. Andrew Tisch

Mr. and Mrs. John L. Vogelstein  
Ms. Giselle F. Wagner and  
Mr. Paul A. Myerson  
Nina W. Werblow Charitable Trust  
Mr. and Mrs. Robert B. Zink

#### **\$5,000 to \$9,999**

Mr. and Mrs. James D. Abrams  
The Anne and Ronald Abramson  
Family Foundation  
Ms. Deidre Adkins  
Aon Foundation  
Mr. and Mrs. Robert Banks  
Mr. and Mrs. Ron Baron, Baron Capital  
Foundation  
Mr. and Mrs. Gustavo A. Cisneros  
Mr. Michael T. Cohen  
Mr. Robert O. Delaney  
Mr. and Mrs. Warren Diamond  
Mr. and Mrs. Craig Duchossois  
Mr. and Mrs. Paul Edgerley  
Mr. and Mrs. Joel S. Ehrenkranz  
Father's Day/Mother's Day Council, Inc.  
Mr. and Mrs. George Ferris  
Mr. and Ms. Dennis FitzSimons  
Forest Laboratories, Inc.  
Mr. and Mrs. Thomas Friedman  
Mr. and Mrs. Richard I. Furman  
The Gabelli Funds  
The Giants Foundation, Inc.  
GlaxoSmithKline  
Mr. and Mrs. Roger Hertog  
Janssen Research & Development-  
Johnson & Johnson  
Mr. and Mrs. Harry P. Kamen  
Kekst and Company Incorporated  
Lazo Foundation  
Mr. and Mrs. Daniel S. Loeb  
Mrs. Holly Madigan  
Ms. Barbara Manilow  
The Marc Haas Foundation,  
Mr. and Mrs. Stanley Shuman  
Mr. and Mrs. Kelly Martin  
Ms. Carlyn McCaffrey  
Mr. and Mrs. John McCambridge  
Mr. and Mrs. Andrew McKenna  
Michael J. Fox Foundation for  
Parkinson's Research  
Ms. Jennifer Miller and Mr. Mark Ehret  
Mr. Ira Millstein  
Mr. Charles Moffett  
Mr. and Mrs. Andy Moller  
National Multiple Sclerosis Society  
Mr. Michael O'Halleran  
Mr. and Ms. William Osborn  
Mrs. Janet Kelly Phillips

Margot and Thomas Pritzker  
Family Foundation  
Ms. Patricia Quick  
Ms. Margaret Rice  
Ms. Liz Robbins and Mr. Doug Johnson  
Ms. Pilar Crespi Robert and Mr. Stephen  
Robert  
Mr. and Mrs. Thomas Roberts  
Mr. and Mrs. Elihu Rose  
Ms. Emily Rose  
Mr. and Mrs. Jack Rudin  
Patrick G. and Shirley W. Ryan Foundation  
Ms. Patricia Bennett Sagon  
Mr. and Mrs. Richard E. Salomon  
Mr. and Mrs. Gerald Schaeffer  
Mr. and Mrs. George W. Schiele  
The Sheldon H. Solow Foundation  
South Coast Capital Corporation,  
Mr. Philip Lovett  
Mrs. Edward D. Stone  
Mr. and Mrs. Donald Tober  
Mrs. Elizabeth van Merkensteijn  
Trish and George Vradenburg,  
USAagainstAlzheimer's  
Mrs. Jeanette Sarkisian Wagner and  
Dr. Paul A. Wagner  
Mr. and Mrs. John F. Walsh  
Weil, Gotshal & Manges Foundation Inc.  
Wheels, Inc.  
Mrs. Malcolm Hewitt Wiener  
The Honorable Corinne Wood and  
Mr. Paul Wood  
Ms. Linda Zambelli  
Mr. and Mrs. Carl Zelinsky  
Mr. Mortimer B. Zuckerman

#### **\$1,000 to \$4,999**

Anonymous (3)  
Mr. and Mrs. Frederick R. Adler  
Ms. Susan Agger  
Ms. Tina Alster  
Mr. Ronald A. Altman  
Mr. and Mrs. John Amboian  
Mr. and Mrs. Steven Ames  
Mr. Roger Anderson  
Ms. Gloria Anderson  
Mr. Richard Aneser  
Mr. and Mrs. John Angelo  
Mr. Artemis Anninos  
Mr. Edgar Bachrach  
The David and Barbara Baldwin  
Foundation  
Ms. Mercedes T. Bass  
Mr. Dennis Basso and  
Mr. Michael Cominotto  
Baxter Healthcare Corporation  
Mr. Leonard J. Bencivenga

Dorothy G. Bender Foundation  
Mr. and Mrs. Bruce Berger  
Dr. Arnold Berman  
The Honorable and Mrs. Stuart Bernstein  
Bernstein Family Foundation  
BioFocus  
Mr. Steve Blacher  
Mr. and Mrs. Wolf Blitzer  
Mr. and Mrs. Bernard Bloom  
Mr. and Mrs. Roy Bostock  
Dr. and Mrs. Mark K. Bowen  
Mrs. Susan Braddock  
Mr. and Mrs. Lawrence Brandt  
Dr. Eric Braverman  
Mr. Daniel J. Brigati  
Mr. and Mrs. Alan Bubes  
Mrs. Melva Bucksbaum and  
Mr. Raymond Leary  
Mr. and Mrs. Leonard Burka  
Ms. Sharon Burka  
Ms. Bari Burman  
Ms. Mary K. Bush  
Mr. and Mrs. Louis Caceres  
Mr. and Mrs. William Cafritz  
Ms. Cairtrine Callison  
Mr. and Mrs. Charles Cangro  
Ms. Giosetta Capriati  
Mr. John K. Castle  
Mr. and Mrs. Wright Caughman  
Ms. Lois Chiles and Mr. Richard Gilder  
Ms. Jeanne Coleman  
Mr. and Mrs. Charles Collat, Sr.  
Mr. and Mrs. Mark Colman  
Mr. Owen Condon  
Mr. and Mrs. Bob Cooney  
Mr. and Mrs. John D. Cooney  
Mr. and Ms. Peter H. Coors  
Mrs. Joyce Cowin  
Ms. Brittain B. Cudlip  
Mr. and Mrs. Arnaud de Borchgrave  
Mr. John D. Demsey  
Mr. Paul Deslongchamps  
Mr. Lawrence Doyle  
Dr. and Mrs. Ronald Dozoretz  
Mr. and Mrs. Rodman Drake  
Mr. and Mrs. Kenneth Duberstein  
Mr. and Mrs. Todd Eagle  
Mr. and Mrs. John Eastman  
Eckert Seamans Cherin & Mellott, LLC  
Mr. and Mrs. Lewis M. Eisenberg  
Mr. and Mrs. Richard Elden  
Ambassador and Mrs. Edward E. Elson  
Mrs. Sondra Berman Epstein and  
Mr. Sidney Epstein  
Mr. and Mrs. Melvyn J. Estrin  
Mr. Stuart M. Fain

Mr. and Mrs. William Farley  
Ms. Samia Farouki  
Mr. and Mrs. David C. Farrell  
Mr. and Ms. W. J. Farrell  
Mr. and Mrs. Kenneth Feld  
Mr. and Mrs. Marshall Field  
Mr. and Mrs. Harry Fields  
Dr. Howard Fillit  
Ms. Marcia French  
Mrs. Emily T. Frick  
Ms. Charlotte Moss and  
Mr. Barry Friedberg  
Fross Zelnick Lehrman & Zissu P.C.  
Ms. Mary Galvin  
Gantz Family Foundation  
Ms. Brooke Garber and  
Mr. Daniel M. Neidich  
Mr. and Ms. Robert P. Garrett  
Mr. Bruce Gelb  
Genentech USA  
Mr. David Gerson  
Mr. Andrew D. Gilbert  
Ambassador and Mrs. Joseph B. Gildenhorn  
Mr. and Mrs. Jim Glassman  
Mr. Joseph B. Glossberg  
Mr. David Goodes  
Mr. Sheldon Gordon  
Mr. and Mrs. Ian Graham  
Mrs. and Mrs. Richard Gray  
Mr. Peter Green  
Ms. Sylvia Greenberg  
Mr. Alexis Gregory  
Mr. and Mrs. Philip M. Gross  
Mr. and Mrs. Martin Gruss  
Ms. Agnes Gund  
The Geoffrey Gund Foundation  
Hagin Capital LLC  
Ms. Judy Jackson and Mr. Bruce Haims  
Mr. and Mrs. William H. Hamm III  
Ms. Jane Harman  
Mr. Chris Harris  
Ms. Ellen R. Harris  
Mr. Kenneth H. Heitner  
Mr. and Mrs. John Heller  
Mr. and Mrs. David Heller  
Mr. and Mrs. Barnett Helzberg, Jr.  
Mr. Terrence Hendricks  
Mr. and Mrs. Lawrence Herbert  
Mrs. Ronnie F. Heyman  
Mr. and Mrs. John Hickey, Jr.  
Mr. John Higgins  
Ms. Catherine Hirsch  
Ms. Melody L. Hobson  
Ms. Ann Marie Huebner and  
Mr. Ross P. Waller  
Ms. Berna Huebner

Mr. and Mrs. Kit Illick  
Ms. Deborah Imperatore  
Mr. and Mrs. Verne G. Istock  
The Melvin and Rosalind Jacobs  
Family Foundation  
Mr. and Mrs. Richard Jaffe  
Ms. Nada Jain  
Mr. David Jarvis  
Mr. and Mrs. Maurice Jennings  
Mr. Christopher Johnson  
Jordan Industries International LLC  
JSW Lifesciences GmbH  
Lady Barbara Thomas Judge  
Rita J. and Stanley H. Kaplan Family  
Foundation, Inc.  
Kasper  
Mr. and Mrs. John Kelsey  
Mr. and Mrs. James C. Kennedy  
Mr. and Mrs. Shaker Khayatt  
Dr. and Mrs. Israel Kogan  
Mr. Paul Konstant  
Mr. and Mrs. Frederick A. Krehbiel  
Mr. and Mrs. H. Fred Krimendahl II  
Mr. and Mrs. Peter Krulewitch  
Ms. Joan Krupskas and Mr. Ted Barbour  
Ms. Elizabeth Szancer Kujawski and  
Mr. Tom Zoufaly  
Mr. Jeff Kurtz  
Mr. and Mrs. Richard Landau  
Ms. Marilyn Brody Lane  
Ms. Claudine Larocque  
The Honorable and Mrs. Ronald S. Lauder  
Mr. William P. Lauder  
Mr. and Mrs. Brian Lawlor  
Ms. Ginger Laytham  
Lazard Freres & Co. LLC  
Ms. Alexandra Lebenthal and  
Mr. Jeremy Diamond  
Mr. and Mrs. Melvin Lenkin  
Ms. Marcia Levine and Mr. Pierre Levia  
Mr. and Mrs. Noel Levine  
Mr. and Mrs. Steven Levy  
Mr. and Mrs. Samuel H. Lindenbaum  
Mrs. Anne H. Lindgren  
The Meno Lissauer Foundation Inc.,  
Ms. Alison McCall and Mr. Peter Eleil  
Mr. Leonard D. Litwin  
Mr. and Mrs. Carl Lobell  
Elizabeth and Jeff Louis Foundation  
Mrs. Nancy Lynn  
Mr. and Mrs. Harry Macklowe  
Mr. and Mrs. Vincent A. Mai  
The Honorable and Mrs. Frederic V. Malek  
Mr. Mark Maltzman  
Mr. and Mrs. James C. Marlas  
Mr. and Mrs. Bennett Marshall  
Jack C. Massey Foundation

Mr. and Mrs. Jonathan P. May  
Ms. Katherine Mayer  
Mrs. Shirley Maytag-King  
Ms. Alison McCall and Mr. Peter Elieil  
Ms. Anya McComsey  
Ms. Judy McLaren  
Ms. Robin Meltzer  
Mr. Gilles Mendel  
Mr. and Mrs. Sam Michaels  
Ms. Sandra Miele, The Hampshire  
Companies  
Mr. and Mrs. Donald K. Miller  
Mr. and Mrs. James N. Mills  
Mr. and Mrs. Andrew Mills  
Ms. Karen Moran  
Mr. Patrick R. Morris  
Mr. and Mrs. Lucian Morrison III  
Morgan Stanley  
Mr. and Mrs. Allan Muchin  
Mulé Family Foundation  
Mr. and Mrs. Mark R. Neaman  
Ms. Judith E. Neisser  
NeuroDetective International Inc.  
Neurophage Pharmaceuticals, Inc.  
Mr. and Mrs. Howard Newman  
Mr. and Mrs. William A. Nitze  
Ms. Virginia Norton  
Mr. and Mrs. Larry Nussdorf  
Mr. Jon Old  
Ms. Hannah Pakula  
Patheon  
Ms. Darlene Pasquill and Mr. Mike Hiller  
Dr. Steven Paul  
Mr. and Mrs. Richard S. Pearman  
Ms. Erica Peitler  
Mr. and Mrs. John Pomerantz  
Ms. Phebe Farrow Port  
PsychoGenics, Inc.  
Ms. Deirdre Quinn  
reMYND  
Mr. Clayton Reynolds  
Mr. and Mrs. Lewis Rice  
Ms. Denise Rich  
Richard Gray Gallery L.P.  
Judith Ripka  
Mrs. Sheila Johnson Robbins  
Mrs. Anita Roselle  
Mr. Joseph Rosenblatt  
Ms. Nina Rosenwald  
Mr. Ronald Rosner  
Mr. and Mrs. Laurence Rosoff  
Mrs. Janet C. Ross  
Mr. and Mrs. Wilbur L. Ross, Jr.  
Dr. and Mrs. Ronald M. Roth  
Mr. and Mrs. Howard J. Rubenstein  
The Shelley & Donald Rubin Foundation

**In 2012, gifts were  
made to the ADDF  
in honor of the  
following individuals:**

Milton Lewin and Milian Becker  
Karen Weise and Noah Buhayar  
Amy DiGesio  
Emory University ADRC  
Agnes Farrell  
Howard Fillit  
Ingrid Flores  
Nancy Foxman  
Rosemary Furman  
Frances R. Gewirz  
Melvin R. Goodes  
Mary Alice Griffin  
Ron Johnson  
Leonard A. Lauder  
Angeline Lewis  
Thelma "Bunny" Llyod  
Rita Lullo  
Nancy Lynn  
Marilu Marshall  
Lee Motler  
Fred Myers  
Malene Moore Nadeau  
Dolly Reed  
Phoebe Rice  
Tom and Cece Ricketts  
Pessie Sue Weir and  
Margaret Roberson  
Rose Santoro  
Mary Ellen Schaefer  
Peter J. Solomon  
B.G. Starnes  
Dorothy Stein  
Joan Sutton Straus  
Mary Rose Taylor  
Elsie Williams  
Barbara Wolfson

Mrs. Genevieve McSweeney Ryan  
Mr. Kevin M. Ryan  
Mr. and Mrs. David Sable  
Mr. and Mrs. Sal Salibello  
Satori Pharmaceuticals Inc.  
Mr. and Mrs. George Saunders, Jr.  
Mr. Peter M. Scheer  
Mr. and Mrs. Lloyd Schermer  
Mr. David T. Schiff  
Mr. and Mrs. Mitchell Schrage  
Mrs. Barbara Schwartz  
Mr. Edmondo Schwartz  
Mr. and Mrs. Chris Segal  
Ms. Pamela Seymon and  
Mr. Robert Schumer  
The Susan Stein Shiva Foundation  
The Carlynn and Lawrence Silverman  
Family Foundation Inc.  
Mr. Thomas Slater  
Mr. and Mrs. Joshua Slocum  
Mr. and Mrs. Albert H. Small  
Mr. and Mrs. Albert Small, Jr.  
Mr. and Mrs. Joseph E. Smith  
Ms. Angela Smith Domzal  
Mr. and Mrs. Richard Solomon  
Peter J. Solomon Company, LP  
Mr. Maurice Sonnenberg  
Ms. Lisa B. Spikell  
Ms. Emily Spitzer  
Mr. and Ms. Jeffrey Steinberg  
Dr. Philip Stieg  
Mr. and Mrs. David A. Stockman  
Ms. Eleanor Sullivan  
T. Rowe Price Foundation, Inc.  
Ms. Andrea Taetle  
Mr. and Mrs. A. Alfred Taubman  
Ms. Laurie M. Tisch  
Ms. Jamie Tisch  
Ms. Lee Traub  
Ms. Alexandra Trower and  
Mr. Jon Lindsey  
Ms. Eunice C. Valdivia  
Ms. Sahba Vaziri and Mr. Ali Reza  
Viking Global Investors LP  
Mr. and Mrs. Curt von Boetticher  
Mr. and Mrs. Michael Voslow  
Ms. Gretchen A. Wayne  
Ms. Jane Greenwald and  
Mr. Lawrence A. Wein  
The John L. & Sue Ann Weinberg  
Foundation  
Mr. and Mrs. Walter Weiner  
Ms. Linda Weinstein  
Mr. and Mrs. Ronald Weintraub  
Dr. Arthur C. Weisenseele  
Mr. Mason Weisz  
Dr. Tina West

The Honorable and Dr. Marcus Williams  
Ms. Jan Willinger  
Mr. and Mrs. Robert Zarnegin  
Mr. and Mrs. Shelton Zuckerman

**2012 In-Kind Donors**

Abrielle Fine Linens & Lingerie  
Amaryllis Flowers  
Art of Giving  
Bedford Post Inn  
BLT Steak  
Bobbi Brown  
Bottega Veneta  
Bumble & bumble.  
Café Milano  
Carolina Herrera  
Clay & Co.  
Colicchio & Sons  
Colliers International NY LLC  
Creative Parties, Ltd.  
David Burke  
Jay and Cindy DeFrancesco  
Delta Airlines  
Denihan Hospitality Group  
Design Cuisine  
Diener Jewelers – Allison Diener  
Perlmutter  
DKNY  
Douglas Hannant  
Silvia and Peter Dreyfuss  
Eckert Seamans Cherin & Mellott, LLC  
The Estée Lauder Companies Inc.  
Fairmont Hotels & Resorts  
Fiola Restaurant  
The Four Seasons Restaurant  
Four Seasons Hotel, Washington, DC  
Lenny Gordon  
Gotham Dream Cars  
HealthyChocolate NY  
Hickey Freeman  
Hu's Shoes + Hu's Wear  
Jennifer Miller Jewelry  
Jenny Ng Designs  
JetBlue Airways  
Johnny Brookheart Jewelers  
Judith Lieber  
Judith Ripka  
Just Cakes  
Kimpton Hotels & Restaurants  
Knightsbridge Management Corporation  
Elise and Marc Lefkowitz  
Le Relais de Venise L'Entrecôte  
Lincoln Financial Group  
Marchesa  
Martek Corporation

Susan and Emilio Matt  
 Metrokane  
 Molyvos Restaurant and the Livanos Family  
 Montblanc  
 Nancy Corzine  
 New York Jets  
 Oheka Castle  
 Organic Avenue  
 Passion Food Hospitality  
 PCH Films  
 Pirelli Tire North America  
 Prestige Beverage Group  
 The Ritz-Carlton Destination Club  
 The Ritz-Carlton, Washington, DC  
 Royal International Travel Services, Inc.  
 Saks Fifth Avenue  
 Scalamandré  
 Janet Sussman and Michele Weinstein  
 Sharon T. Sager  
 Teuscher Chocolates of Switzerland  
 Fabio and Maria Trabocchi  
 The West Institute for Skin, Laser and Body Contouring  
 W South Beach Hotel and Residences  
 Zagat

### Corporate and Foundation Membership Circle

Alzheimer's Foundation of America  
 The Association for Frontotemporal Degeneration  
 BrightFocus Foundation  
 Charles River Laboratories  
 Ernst & Young, LLP  
 The Estée Lauder Companies Inc.  
 First Republic Bank  
 Flexjet  
 Graff Diamonds  
 Le Papillon Ltd.  
 Lewy Body Dementia Association  
 Merck Research Laboratories  
 The Neiman Marcus Group  
 Northern Trust  
 Pfizer  
 Saks Fifth Avenue  
 Sotheby's  
 Staples  
 Tommy Hilfiger Corporate Foundation  
 UBS

**“The life given us by nature is short, but the memory of a life well spent is eternal.”**

— Cicero

The ADDF remembers and honors those taken by Alzheimer's in 2012 by continuing to fight for a cure.

Melba Bickham  
 Jean T. Brigati  
 Paul Connolly  
 Mary Louise Deal  
 Edwin Everitt  
 Beverly Harris  
 Irwin “Win” Hecht  
 Thomas Hendricks  
 Gloria Hirtz  
 Shirley Lichaw  
 Ronald Loeb  
 Lydia Melendez  
 Joan Morse  
 Bill Opelka  
 Connie Rice  
 Phyllis Rosenthal  
 Warren E. Siegmond

### We are grateful to all who contributed to the ADDF in 2012.

For a complete list of donors, please visit [www.AlzDiscovery.org](http://www.AlzDiscovery.org)

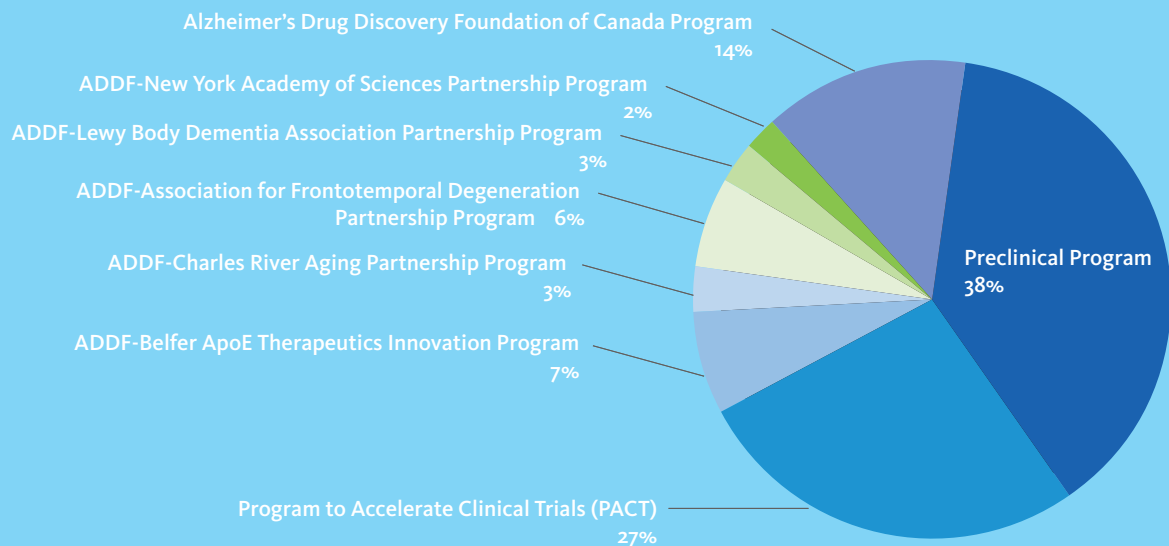
### Legacy Giving

Charitable bequests to the ADDF help us to fulfill our mission to accelerate the discovery of drugs to prevent, treat and cure Alzheimer's disease, related dementias and cognitive aging.

Simply use this suggested language in your will or living trust:  
 “I bequeath [dollar amount/percentage] to the Alzheimer's Drug Discovery Foundation, a New York State not-for-profit organization.”

If you already have a will or living trust, you may add the ADDF as a beneficiary through a codicil or trust amendment. Bequests to the ADDF are not subject to estate tax. Consult with your attorney or other advisors to make sure that your bequest makes sense as part of your overall estate plan. For more information about ways to give, please call 212-901-8000.

## ADDF 2012 Grants



### Preclinical Drug Discovery Program — Academic

#### Carmela R. Abraham, PhD

Boston University School of Medicine,  
Boston, Massachusetts

*Development of Klotho Enhancers as Novel Therapeutics for AD*

AWARD: \$196,421

#### Antonino Cattaneo, PhD

Scuola Normale Superiore, Pisa, Italy

*Preclinical development of "painless" human Nerve Growth Factor*

AWARD: \$175,000

#### Marcie Glicksman, PhD

Harvard Neurodiscovery Center, Cambridge,  
Massachusetts

*Collaborative CNS Screening Initiative*

AWARD: \$123,433

*\*Beyond Batten Disease Foundation/Multiple Sclerosis Society*

#### Anil Gulati, MD, PhD

Midwestern University, Downers Grove, Illinois

*Nanocarrier formulation of ETB receptor agonist, IRL-1620, for the treatment of Alzheimer's disease*

AWARD: \$96,694

#### Andrew Horti, PhD

Johns Hopkins University, School of Medicine,  
Baltimore, Maryland

*Cannabinoid CB<sub>2</sub> radioligands for PET imaging of neuroinflammation in Alzheimer's disease*

AWARD: \$149,970

#### Li Huang, PhD

Duke University, Durham, North Carolina

*Proteasome activator as drug candidates in Alzheimer's disease*

AWARD: \$100,000

*\*Alzheimer's Drug Discovery/Alzheimer's Foundation of America Award to Accelerate Drug Discovery*

#### Jeff Kuret, PhD

Ohio State University, Columbus, Ohio

*Imaging agents for diagnosis of tauopathic neurodegenerative diseases*

AWARD: \$150,000

*\*Alzheimer's Drug Discovery Foundation/Alzheimer's Foundation of America Award to Accelerate Drug Discovery*

#### Ana Martinez, PhD

Medicinal Chemistry Institute-CSIC, Madrid, Spain

*Evaluation of cognition and hippocampal neurogenesis after oral administration of a phosphodiesterase 7 inhibitor in an Alzheimer's disease mice model*

AWARD: \$120,000

**Elliot Mufson, PhD**

Rush University Medical Center, Chicago, Illinois  
*CSF proNGF: a putative biomarker for Alzheimer's disease*  
 AWARD: \$130,734

**John Schetz, PhD**

University of North Texas Health Science Center,  
 Fort Worth, Texas  
*Target-based discovery of druggable regulators of  
 peroxynitrite-induced nitration as a novel treatment  
 strategy for Alzheimer's disease*  
 AWARD: \$199,803

**Eugenia Trushina, PhD**

Mayo Clinic Rochester, Rochester, Minnesota  
*Mechanism of restoration of mitochondrial function  
 by tricyclic pyrone compounds*  
 AWARD: \$181,757

**Neil Vasdev, PhD**

Massachusetts General Hospital/Harvard Medical School,  
 Charlestown, Massachusetts  
*Radiopharmaceutical Development for Imaging  
 Metabotropic Glutamate Subtype 5 Receptors (mGluR5)  
 in AD patients with PET*  
 AWARD: \$175,000

**Yan Zhang, PhD**

The University of Texas at Austin, Austin, Texas  
*Selective Inactivation of Human Phosphatases for  
 Neuronal Regeneration*  
 AWARD: \$132,960

**Biotechnology Program — Preclinical****Joseph Harding, PhD**

M3 Biotechnology, Inc., Pullman, Washington  
*Development of small molecule hepatocyte growth  
 factor mimetic for the treatment of dementia*  
 AWARD: \$174,993

**Mark Rampy, PhD**

CohBar, Inc., Pacific Palisades, California  
*Optimization and Preclinical Development of a Novel  
 Therapeutic Peptide For Alzheimer's Disease*  
 AWARD: \$205,260

**Thadd Reeder, PhD**

Glialogix, Inc., San Francisco, California  
*Testing of GLX1112 in an Alzheimer's mouse model*  
 AWARD: \$207,000

**Lawrence Wennogle, PhD**

Intra-Cellular Therapies, Inc., New York, New York  
*Validation of a Novel Target Mechanism to Counter  
 Progression of Alzheimer's Disease*  
 AWARD: \$219,667

**Program to Accelerate Clinical Trials (PACT)****Sandra Black, MD, FRCP(C)^**

Sunnybrook Research Institute, University of Toronto,  
 Toronto, Canada  
*Sartans to Slow Alzheimer's Disease: A Randomized,  
 Open-Label, Head-to-Head, Proof-of-Concept Study of  
 Angiotensin Receptor Blockers Versus ACE Inhibitors  
 in Hypertensive Mild-Moderate AD Patients using  
 Ventricular Enlargement as Primary Outcome*  
 AWARD: \$992,388  
 \*The W. Garfield Weston Foundation/Alzheimer's Drug Discovery  
 Foundation of Canada Award

**Steven Estus, PhD**

University of Kentucky Research Foundation,  
 Lexington, Kentucky  
*Translating genetics into biomarkers and therapies:  
 apoE/Ab and apoJ/Ab complex levels and lipidation  
 state as AD biomarkers modulated by VPA*  
 AWARD: \$117,000

**Allan Levey, MD, PhD**

Emory University School of Medicine,  
 Atlanta, Georgia  
*A phase IIa, double-blind, placebo-controlled,  
 biomarker study of atomoxetine in subjects with  
 mild cognitive impairment*  
 AWARD: \$447,900  
 \*2012 Fund a Scientist Auction Award

**Olga Meulenbroek, PhD**

Radboud University Medical Centre,  
 Nijmegen, The Netherlands  
*Nilvad add-on study: The effects of nilvadipine on blood  
 pressure, cerebral autoregulation, -blood flow and -damage  
 in Alzheimer's disease*  
 AWARD: \$380,224

**Ana Pereira, MD**

The Rockefeller University, New York, New York  
*Glutamatergic Dysfunction in Cognitive Aging:  
 Riluzole in Mild Cognitive Impairment*  
 AWARD: \$250,000

**Biotechnology****Gary Landreth, PhD**

ReXceptor Therapeutics, Cleveland, Ohio  
*A Randomized Controlled Study to Evaluate the Effect of  
 Bexarotene, an RXR Agonist, on beta-Amyloid and  
 Apolipoprotein E Metabolism in Healthy Subjects*  
 AWARD: \$750,000  
 \*The Charles Evans Foundation/Alzheimer's Drug Discovery Award;  
 BrightFocus Foundation

### **ADDF-Belfer ApoE Therapeutics Innovation Program**

#### **Mary Jo LaDu, PhD**

University of Illinois at Chicago, Chicago, Illinois

*Modulation of human apoE isoform levels as a therapeutic target using a new Alzheimer's disease transgenic mouse model*

AWARD: \$91,000

*\*Alzheimer's Drug Discovery Foundation/The Samuel Freeman Charitable Trust Award to Accelerate Drug Discovery*

#### **Cheryl Wellington, PhD**

University of British Columbia Hospital, Vancouver, Canada

*Novel modulators of apoE function*

Award: \$148,000

### **Biotechnology**

#### **Rick Jack, PhD**

Madera Biosciences, Inc., San Diego, California

*In vitro and in vivo optimization of ApoE modulators for Alzheimer's disease*

AWARD: \$298,500

### **ADDF-Charles River Aging Partnership Program**

#### **Khalid Iqbal, PhD**

New York State Institute for Basic Research in Developmental Disabilities, New York, New York

*Rescue of Neuronal Plasticity and Cognitive Impairments in Aged Rats*

AWARD: \$254,450

### **ADDF-Association for Frontotemporal Degeneration Partnership Program**

#### **Nigel Cairns, PhD**

Washington University, St. Louis, Missouri

*Restoring progranulin in frontotemporal disease*

AWARD: \$156,990

#### **Jeffrey Rothstein, MD, PhD**

Johns Hopkins University, School of Medicine, Baltimore, Maryland

*Development of Antisense therapy and Therapeutic biomarker for C9orf72 FTD/ALS mutation patients*

AWARD: \$125,856

#### **W. Haung Yu, PhD**

Columbia University Medical Center, New York, New York

*Development of small molecule enhancers of autophagy for the clearance of protein aggregates and treatment of FTD*

AWARD: \$149,642

### **ADDF-Lewy Body Dementia Association Partnership Program**

#### **Omar El-Agnaf, PhD**

United Arab Emirates University, Al-Ain, United Arab Emirates

*Testing a combination of CSF biomarkers for discriminating dementia with Lewy bodies from other neurodegenerative disorders and controls*

AWARD: \$100,000

#### **Michelle Mielke, PhD**

Mayo Clinic Rochester, Rochester, Minnesota

*Plasma lipidomic and alpha-synuclein comparison of individuals with alpha-synuclein, amyloid, or normal pathology*

AWARD: \$100,000

### **ADDF-New York Academy of Sciences Partnership Program**

#### **Douglas Galasko, MD**

University of California, San Diego, La Jolla, California

*Development of synaptic biomarkers related to AMPA-receptor trafficking in Alzheimer's Disease*

AWARD: \$140,000

### **Conference Grants**

#### **Jennifer Henry, PhD**

New York Academy of Sciences, New York, New York

*Targeting the Vasculature in Alzheimer's Disease and Vascular Cognitive Impairment*

AWARD: \$16,719

#### **Sharon Hesterlee, PhD**

Association for Frontotemporal Degeneration, Philadelphia, Pennsylvania

*Clinical Development in Frontotemporal Degeneration*

AWARD: \$5,000

#### **George Vradenburg**

USAgainstAlzheimer's Network, Washington, DC

*Alzheimer's Talks: "What's in the new National Alzheimer's Plan to stop Alzheimer's by 2025?"*

AWARD: \$10,000

#### **David Woodland, PhD**

Keystone Symposia on Molecular and Cellular Biology, Silverthorne, Colorado

*New Frontiers in Neurodegenerative Disease Research*

AWARD: \$2,500



# Alzheimer's Drug Discovery Foundation

## Statements of Financial Position

	Unaudited 12/31/12
<b>Assets</b>	
Cash and cash equivalents	
Operating	\$ 2,556,159
Restricted	182,896
Total cash and cash equivalents	<u>2,739,055</u>
Investment, at fair value	8,115,777
Contributions receivable	2,742,129
Other assets	16,224
<b>Total assets</b>	<u>\$ 13,613,185</u>
<b>Liabilities and Net Assets</b>	
Liabilities	
Accounts payable and accrued liabilities	\$ 62,806
Grants payable	7,485,431
Deferred revenue	132,049
Due to the Institute for the Study of Aging, Inc.	9,763
Total liabilities	<u>7,690,049</u>
Net assets	
Unrestricted	4,920,240
Temporarily restricted	1,002,896
Total net assets	<u>5,923,136</u>
<b>Total liabilities and net assets</b>	<u>\$ 13,613,185</u>

## Statement of Activities

	Unaudited 12/31/12
<b>Change In Net Assets</b>	
Support and Revenues	
Support	
Contributions and grants	\$ 5,930,926
In-kind contributions from the Institute for the Study of Aging, Inc.	2,753,087
Proceeds from special events, net of direct expenses	3,349,090
Revenues	
Grant Returns	133,860
Conference registration fees and other income	220,582
Interest income	6,352
Total support and revenues	<u>12,393,897</u>
Expenses	
Program services	8,004,920
Fund raising	1,051,466
Management and general	532,910
Total expenses	<u>9,589,296</u>
Change In net assets	2,804,601
Net assets, beginning of year	<u>3,118,535</u>
Net assets, end of period	<u>\$ 5,923,136</u>

*Audited financials available upon request*

## ADDF 2012 Board



### 2012 Board of Governors

*Honorary Chairman*  
**Sandra Day O'Connor**

*Co-Chairmen*  
**Leonard A. Lauder**  
**Ronald S. Lauder**

*President*  
**Nancy Corzine**

**Robert A. Belfer**  
**Bonnie Pfeifer Evans**  
**Lady Lynn Forester de Rothschild**  
**Melvin R. Goodes**  
**Nancy Goodes**  
**Randal Sandler**  
**Alice Shure**  
**Peter J. Solomon**  
**Sally Susman**  
**Paula Zahn**

*Ex Officio*  
**Howard Fillit, MD**  
**Nancy Lynn**

*Officers*  
**Lisa Somar**  
**Joan Krupskas**

### 2012 Board of Overseers

*Co-Chairmen*  
**Susan Roth Katzke**  
**Sharon T. Sager, CIMA**  
**Randal Sandler**

**Carol Seabrook Boulanger**  
**Charles Cangro**  
**Faith Perlmutter Diamond**  
**Julie Eskay-Eagle**  
**Allan Green, MD, PhD, JD**  
**Christopher Johnson**  
**Alexandra Lebenthal**  
**Elise Gelman Lefkowitz**  
**Philip Lovett**  
**Emilio Matt**  
**Phebe Farrow Port**  
**Joan Sutton Straus**  
**Mary Rose Taylor**  
**Alison Zaino**  
**Linda S. Zambelli**

Joint Annual Board Meeting  
of the Board of Governors  
and the Board of Overseers.  
December 12, 2012

*As of December 31, 2012*

## ADDF 2012 Staff

### **Howard Fillit, MD**

Executive Director and Chief Science Officer

### **Nancy Lynn**

Executive Director and Chief Operating Officer

### **Science**

#### **Diana Shineman, PhD**

Director, Scientific Affairs

#### **Rachel Lane, PhD**

Assistant Director, Scientific Affairs

#### **Penny Dacks, PhD**

Assistant Director, Aging and Alzheimer's Disease Prevention

#### **Filomena Machleder**

Assistant Director, Institutional Partnerships

#### **Niyati Thakker**

Grants Manager

#### **Sara Classen**

Coordinator, Conferences and Meetings

#### **Natalie Romatz**

Coordinator, Conferences and Meetings

### **Administration**

#### **Aspasia Moundros**

Executive Assistant

### **Development**

#### **Vina Orden**

Director, Major Gifts

#### **Jayme Rubright**

Director, Corporate and Strategic Relations

#### **Kate Polidori**

Assistant Director, Special Events

#### **Allison Sawczyn**

Assistant Director, Development

#### **Carrie Tracy**

Assistant Director, Special Events

#### **Dina Miller**

Development Associate

#### **Elizabeth Feskoe**

Coordinator, Database and Development

#### **Mollie Wein**

Special Events Coordinator

### **Finance**

#### **Ethan Hutchinson**

Director, Finance and Administration

#### **Diane Duong**

Finance Manager

**The ADDF has granted  
nearly \$60 million to  
fund over 400 programs  
in 18 countries.**



Alzheimer's  
**Drug Discovery**  
Foundation

Conquering Alzheimer's Through Drug Discovery

57 West 57th Street, Suite 904  
New York, NY 10019  
Phone: 212 901-8000  
Email: [info@alzdiscovery.org](mailto:info@alzdiscovery.org)

[www.AlzDiscovery.org](http://www.AlzDiscovery.org)