



Alzheimer's  
**Drug Discovery**  
Foundation

*INSPIRING  
CHANGE  
CAPTURING  
PROMISE*



# *INSPIRING CHANGE CAPTURING PROMISE*

*To inspire is to stimulate... motivate... activate.*

For the past 22 years, the Alzheimer's Drug Discovery Foundation (ADDF) has been providing a backbone for scientific discovery and drug development in the Alzheimer's research arena, serving as a significant driver of meaningful innovation and change.

We have partnered with top researchers to aid in the incubation of novel ideas in the quest to find answers for a disease that for decades has confounded the medical and science communities. We are proud of the key role we have played in broadening the focus of discovery towards the biology of aging—shifting the research landscape.

Key advances in 2020 indicate that we are truly hitting our stride. Many initiatives with the ADDF's footprint are paying off in breakthrough firsts, including the first diagnostic blood test to come to clinic for Alzheimer's disease. More than ever, we see continued great promise and potential ahead, and it is our mission to capture it.

## *INSIDE THIS REPORT*

2

LETTER FROM OUR  
FOUNDERS

3

LETTER FROM OUR  
FOUNDING EXECUTIVE  
DIRECTOR

4

THE PROMISE OF A  
DIVERSE RESEARCH  
PIPELINE

10

OUR PIPELINE AT A  
GLANCE

12

THE PROMISE OF  
PREVENTION

14

THE PROMISE OF  
RECORD-SETTING SUPPORT

16

CAPTURING THE PROMISE  
OF OUR 2020 HONOREES

18

NEW AND CONTINUING  
PROGRAMS

21

OUR  
SUPPORTERS

26

LEADERSHIP

28

2020 FINANCIAL  
OVERVIEW



Alzheimer's  
**Drug Discovery**  
Foundation

## LETTER FROM OUR FOUNDERS

### *Dear Friends,*

A global pandemic—the first of its kind in over 100 years—made 2020 a year unlike any other. Despite the challenges posed by the COVID-19 pandemic, 2020 was a great year for Alzheimer’s research and the Alzheimer’s Drug Discovery Foundation. Our leadership, dedication and investment were reflected in so many of the advances we saw last year.

The ADDF has been inspiring change for more than 20 years—encouraging new approaches to Alzheimer’s research. Our early, bold vision is now mainstream with researchers across the globe looking at novel and repurposed drugs that target the many age-related changes that contribute to Alzheimer’s.

You will read in this report how ADDF support helped bring the first-ever blood test to market for early detection of Alzheimer’s disease with another blood test on the horizon. Our Diagnostics Accelerator program continues to lead the way in the development of blood tests and other biomarkers by investing in innovative ideas and bringing the research community together to share and grow its knowledge.

You will read about the many research initiatives we nurtured that have advanced into phase 2 clinical trials. Several reported positive results and more are expected to report soon. Our venture philanthropy model also proves itself time and again with many of our early investments helping to attract larger funding streams from government agencies like the National Institute on Aging, private investors, and large pharmaceutical companies.

This report features our ongoing efforts to uncover and share growing evidence about the benefit of prevention and brain health. Our Cognitive

Vitality program provides credible, science-based strategies to help prevent Alzheimer’s disease and related dementias.

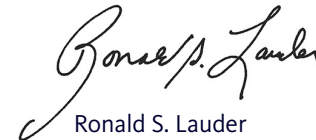
We are on the cusp of exciting progress. The ADDF will continue its trademark dedication as we close in on treatments and cures for Alzheimer’s and related diseases.

We are forever grateful to you for adopting our goals as your own. With your ongoing support, we come closer every day to changing the course of this devastating disease.

The ADDF will not stop until we satisfy our mission. You have our promise.



Leonard A. Lauder  
**Co-Chairman and Co-Founder**



Ronald S. Lauder  
**Co-Chairman and Co-Founder**



## Dear Friends,

I have been proud to lead the scientific exploratory efforts at the Alzheimer's Drug Discovery Foundation every single day of the past 22 years. But perhaps never more so than now. The ADDF has played a major role in driving innovative ideas that have advanced—and will continue to advance—the Alzheimer's research field.

The ADDF was instrumental in shifting the dial from a single-minded focus on misfolded amyloid and tau proteins towards an exploration of all the biological aspects of the aging process that contribute to the development and progression of Alzheimer's. We have inspired a sea change in approach that has altered the course of Alzheimer's drug discovery and development, with tremendous progress in just the past five years.

We have evolved from a boutique supporter of pre-clinical research to a dominant force in clinical development research. In 2020, we rode this trajectory into a “modern era” of Alzheimer's research. Our robust and diverse pipeline of drugs in development reflects our translation of the biology of aging into cutting-edge therapeutics for Alzheimer's disease.

This report details our accomplishments as we worked with leading scientists to explore novel targets, repurposed drugs, and supported innovative prevention

strategies. We also helped drive advances in diagnostic biomarkers—including the breakthrough launch by C2N Diagnostics of the first-ever commercially available blood test for Alzheimer's disease. We continue to contribute to the development of even more novel diagnostics through our Diagnostics Accelerator.

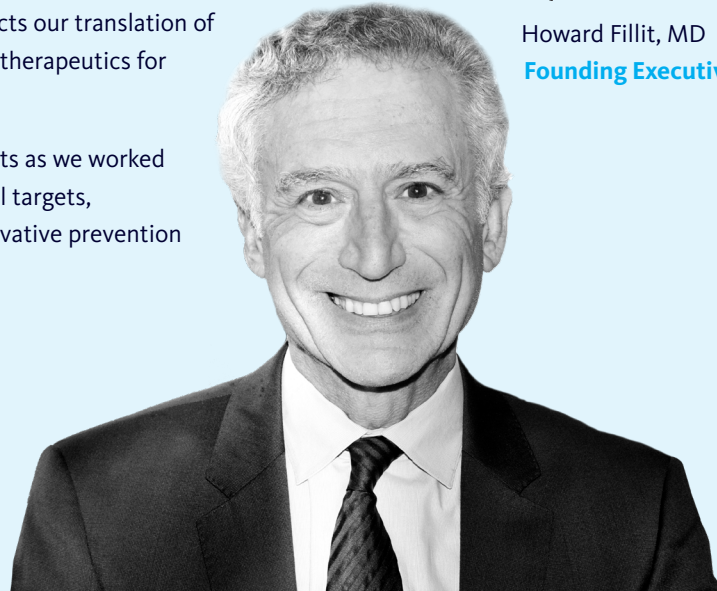
I am more excited and hopeful about Alzheimer's research with every passing year. Phase 2 studies of many potential treatments are reporting their results. We continue to collaborate with leading scientists and marquee-name investors who will take us to the next level in our quest, and we have a new diagnostic test on the market with more to follow. We are closer than ever to capturing the promise of effective drugs to treat and prevent Alzheimer's disease.

With gratitude for your continued support,



Howard Fillit, MD

**Founding Executive Director and Chief Science Officer**



# THE PROMISE OF A DIVERSE RESEARCH PIPELINE

At the ADDF, we know there is more than one solution to the Alzheimer’s puzzle. Our long-term goal is to uncover a variety of treatments that can ultimately be individualized to suit each patient’s needs. As such, our drug development philosophy calls for using a broad range of approaches to improve the likelihood for success, envisioning a future of combination therapy.

Our record-high 2020 investment of over \$30 million to support more than 100 new and continuing active research projects was in sync with our mission to develop drugs that work on various pathways—addressing the full range of possible causes of Alzheimer’s disease. For years, our contributions have inspired the scientific community to consider

approaches beyond amyloid, encouraging exploration of additional targets associated with the biology of aging. We have been instrumental in leading the way in investigations of other misfolded proteins (such as tau), inflammation, vascular problems, genetic mutations, metabolic brain dysfunction, and other age-related changes.

*“After years of discovery, we are now hitting our stride across multiple areas of the Alzheimer’s disease landscape, with the promise of more to come.”*

**Mark Roithmayr**  
Chief Executive Officer



Global pandemic notwithstanding, we sustained our influencer role and remained a leading catalyst for driving innovation in Alzheimer’s drug discovery, including these highlights:



**An ADDF-funded blood test, first to come to the clinic,** revolutionized the ability to detect Alzheimer’s



**An ADDF-supported brain imaging breakthrough** played a key role in a pivotal drug trial



**Numerous ADDF-backed drug trials moved forward** with repurposed drugs front and center



## INSPIRING CHANGE

### OUR VENTURE PHILANTHROPY MODEL PROMISES ONGOING INNOVATION

At the ADDF, our distinctive approach to funding allows us to invest money and resources in bold ideas that can speed the development of drugs, biomarkers, and diagnostic tools for Alzheimer's. We identify promising concepts that may have been deemed too risky to attract investment capital. Our early involvement frequently serves as a bridge, allowing studies to advance to the point where other investors—including the pharmaceutical industry and government agencies—are willing to jump in with support.

An example of this funding progression occurred in 2020, as **Cognition Therapeutics**, which the ADDF began supporting more than 10 years ago, was awarded over \$75 million from the National Institute on Aging (NIA) for its phase 2 clinical trial program of a neuro-protective drug with disease-slowing and possible disease-preventing properties.

Employing a venture philanthropy approach as our business model for over 20 years, we make mission-related investments in research. Our model combines deep, disease-focused expertise with funding for research programs from academia and biotech companies worldwide. When our programs succeed, we re-invest our mission-related returns in further research. Since its inception, the ADDF has generated

returns of \$22 million, with more than \$4 million in 2020 alone.

A key feature of our venture philanthropy approach is our high level of engagement and long-term commitment to our partners. 2020 highlights include:

**Tetra Therapeutics** engaged in a \$500 million deal to merge with Shionogi Inc., a research-driven pharmaceutical company, to develop Tetra's portfolio of products for the treatment of brain disorders associated with cognitive deficits.

**Vanderbilt University** entered a \$515 million licensing agreement with Acadia Pharmaceuticals to advance its cognitive enhancing, potentially neuroprotective drug into phase 2 clinical trials.

*"Our funding model is about advancing the research so we can get effective treatments into the hands of patients and their families."*

**Mark Roithmayr**  
Chief Executive Officer



## AN ADDF-FUNDED BLOOD TEST FIRST TO CLINIC REVOLUTIONIZED THE ABILITY TO DETECT ALZHEIMER'S

Meaningful progress was made in the long-standing challenge to develop less costly, more accessible methodologies for spotting signs of Alzheimer's and diagnosing disease. Our \$2.8 million decade-long investment in C2N Diagnostics' research paid off with their launch of PrecivityAD™ in October 2020. This breakthrough test uses just a small blood sample to identify whether amyloid plaques—a hallmark of Alzheimer's—are present in a patient's brain, warranting more extensive memory and cognitive evaluation. The ability to easily and non-invasively detect Alzheimer's in vulnerable patients will improve the quality of clinical trials and enhance patient care for decades to come.

*“Our funding helped bring the first FDA-approved diagnostic PET brain scan to market and now has helped bring the first Alzheimer's blood test to market.”*

**Howard Fillit, MD**

*Founding Executive Director and Chief Science Officer*

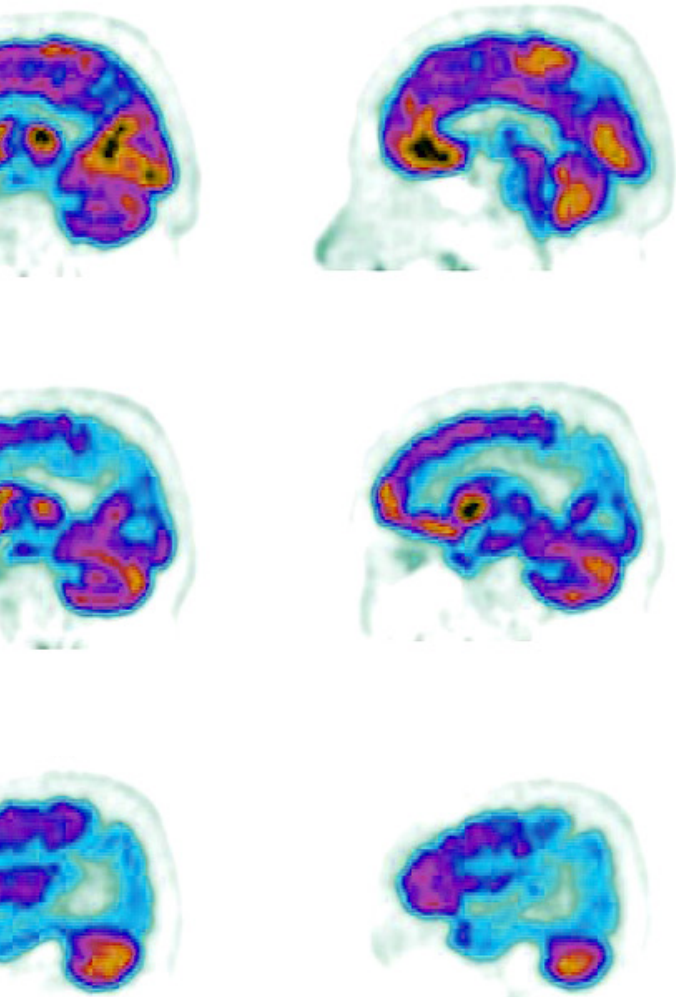


## OUR FOOTPRINT IN BIOMARKERS

**THE ADDF'S COMMITMENT TO ZERO IN ON ALZHEIMER'S TREATMENTS IS ACCOMPANIED BY OUR SIMULTANEOUS EFFORTS TO EXPAND THE WAYS TO DETECT THE DISEASE.**

Biomarkers play a critical role in research, diagnosis, and treatment decisions, as there are still relatively few ways to identify Alzheimer's presence. While the Amyvid™ PET scan revolutionized diagnostics and clinical trial patient enrollment, high costs have limited its use. Other tests such as spinal taps are invasive and costly as well. With more therapies focused on novel targets, such as inflammation or vascular issues, we will





## AN ADDF-SUPPORTED BRAIN IMAGING BREAKTHROUGH PLAYED A KEY ROLE IN PIVOTAL DRUG TRIAL

For years we could only test drugs in patients who were presumed to have Alzheimer's. Approximately 30% of patients participating in Alzheimer's trials just a decade ago did not even have the disease. This means the data in those earlier clinical trials were flawed and inadequate to prove a drug's effectiveness. That changed dramatically thanks to early backing by the ADDF in the development of Amyvid™, a PET imaging test that can detect amyloid plaques in the brain. In 2020, this cutting-edge diagnostic tool was used in Biogen's phase 3 clinical trials of aducanumab (Aduhelm), which targets amyloid. Considered landmark trials, they were among the first to use a validated biomarker test to ensure the right patients were enrolled and to measure the drug's impact in the brain.

Today's trials are more rigorous than ever, having been built on years of research learnings, plus growing availability of Alzheimer's biomarkers and better use of them in clinical trials.

need a myriad of ways to detect the irregularities that might spell Alzheimer's risk or presence. Biomarkers are important for a diverse armament of drugs that can be combined for personalized medicine—the future of managing Alzheimer's.

Our Diagnostics Accelerator (DxA) initiative has united influential philanthropists and researchers in the ongoing quest to fast-track discovery of

reliable, cost-effective, and user-friendly Alzheimer's biomarkers. With funding commitments totaling \$50 million since its 2018 inception, the DxA has supported dozens of world-class researchers in their investigations of novel diagnostic technologies to simplify Alzheimer's detection, including blood/genetic tests, eye scans, and digital tools—all of which are critical to advancing research.

Our investments made through the DxA promise more and better biomarkers will come to market within the next five to 10 years.

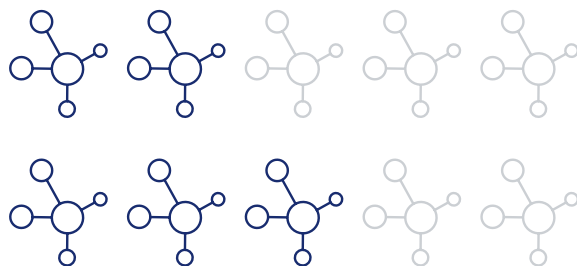
At the ADDF, we envision a time when a single blood sample, simple eye scan, or even a smartphone app will be able to identify several signs of Alzheimer's, allowing for individualized precision medicine treatments matched to a patient's unique pathology.



## NUMEROUS ADDF-BACKED DRUG TRIALS MOVED FORWARD WITH REPURPOSED DRUGS FRONT AND CENTER

Our diverse portfolio—35 clinical trials strong in 2020—is one of the largest world-wide. As always, our 360-degree approach focused on supporting innovative new drugs and targets. We continued to support studies that aim to repurpose drugs already approved for other indications for use in Alzheimer's disease, as prior FDA approvals mean shorter research timelines and reduced costs. In 2020, repurposed agents accounted for nearly half of our portfolio. Studies of the following agents were among those that provided successful phase 2 result read-outs, indicating Alzheimer's disease potential and readiness for phase 3 trials.

Repurposed agents accounted for **49%** of our portfolio





#### **RILUZOLE, APPROVED FOR AMYOTROPHIC LATERAL SCLEROSIS (ALS)**

**Ana Pereira, MD**, of New York City's Icahn School of Medicine at Mount Sinai Hospital demonstrated that this drug modulates levels of glutamate, a brain neurotransmitter, resulting in significantly less decline in cerebral metabolism—strongly correlated with cognitive performance—in patients with mild Alzheimer's.

*“We are deeply appreciative to the ADDF not just for their program development assistance and investment in our work, but for their commitment to novel scientific approaches to Alzheimer's research.”*

**Ana Pereira, MD**



#### **ROTIGOTINE, APPROVED FOR PARKINSON'S DISEASE**

**Giacomo Koch, MD, PhD**, of the Santa Lucia Foundation in Rome showed that this drug works on the brain neurotransmitter dopamine to improve cognitive function in patients with mild-to-moderate Alzheimer's.

*“This study could open novel therapeutic options focused on dopaminergic transmission to treat patients early—when the cognitive functions related to frontal lobe activity and daily life abilities are only mildly impaired—to delay the onset of full-blown Alzheimer's disease dementia.”*

**Giacomo Koch, MD, PhD**



#### **LIRAGLUTIDE, APPROVED FOR DIABETES**

**Paul Edison, MD, PhD**, of Imperial College London presented data indicating that this agent, an analog of the hormone GLP-1, helps normalize the brain's use of glucose energy and its insulin signaling ability, which can be desensitized in Alzheimer's patients. Benefits include potential reduction of brain atrophy and grey matter loss and significant improvement in executive function and temporal lobe volume.

*“Our results from this 12-month phase 2b trial show there was a significant improvement in executive function, temporal lobe volume, and total grey matter in the liraglutide-treated patients compared with placebo.”*

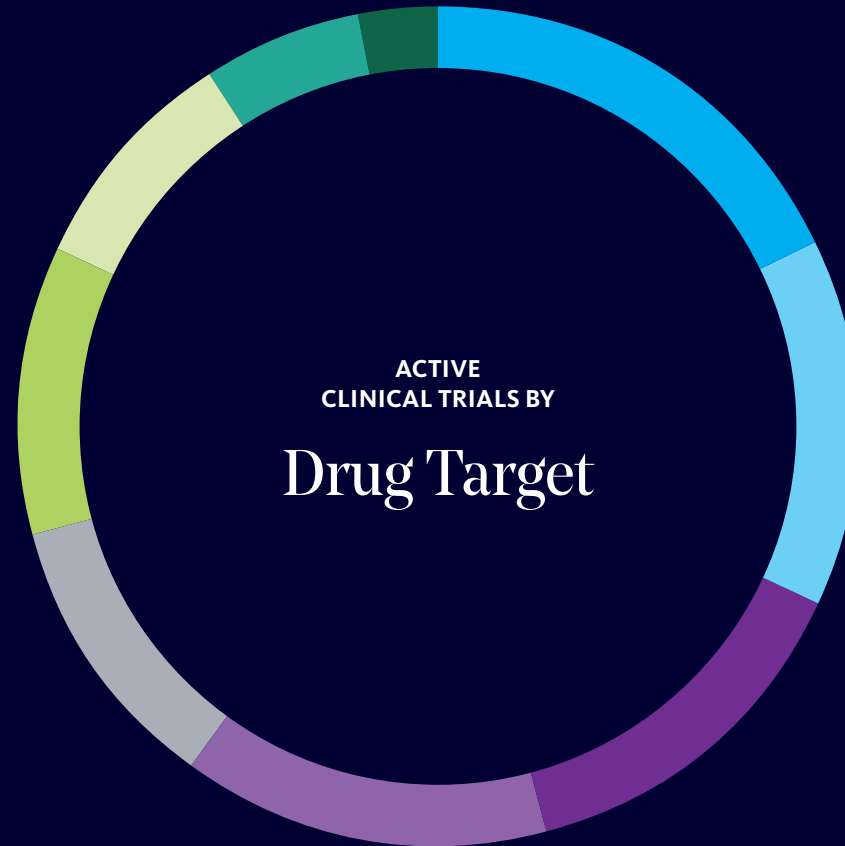
**Paul Edison, MD, PhD**

## OUR PIPELINE AT A GLANCE

# SHEPHERDING A ROBUST CLINICAL PIPELINE TOWARDS A PROMISING FUTURE

Our commitment to phase 2 studies persisted in 2020, representing 74% of the clinical trials we supported. **As more agents approach phase 3, we eagerly anticipate the promise of approvals and patient access.**

Listed clockwise, descending order



18%

Synaptic Activity & Neurotransmitters

14%

Inflammation

14%

Neuroprotection

14%

Genetics & Epigenetics

11%

Misfolded Proteins

11%

Other

9%

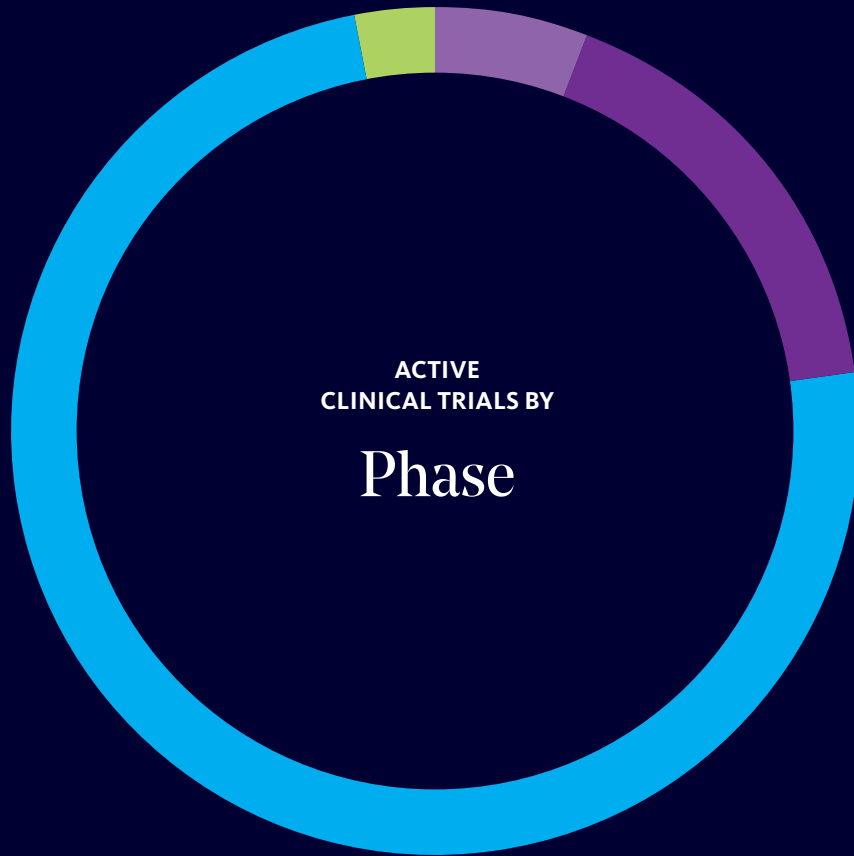
Vascular

6%

Mitochondria & Metabolic Function

3%

Biomarkers



Phase 0  
6%

Phase 1  
17%

Phase 2  
74%

Phase 3  
3%

35

ACTIVE CLINICAL TRIALS

74%

IN PHASE 2

# THE PROMISE OF PREVENTION

While the ADDF has long been a leading force in exploring ways to treat existing cases of Alzheimer's disease, we are simultaneously investigating intriguing ways to stay one step ahead of this formidable disease and stop it before it can take root. Delaying the onset of Alzheimer's by five years may result in up to a 41% lower prevalence of the disease. In 2020, one half of the clinical trials in our portfolio were aimed at either preventing dementia or thwarting the advancement of early mild cognitive impairment into full-blown Alzheimer's dementia.

## INSPIRING SMARTER BRAIN HEALTH CHOICES TO AVERT DISEASE

As public interest in the relationship between brain health, Alzheimer's, and the risks and benefits of various preventive measures has heightened, we responded by stepping up our focus on providing lifestyle and Alzheimer's prevention information for patients, their families, and the medical community.

*"The 2020 Lancet Commission gives us concrete steps we can take to reduce dementia risk or delay its onset."*

**Yuko Hara, PhD**

*Director of Aging and Alzheimer's Prevention*



### **A New Resource for Researchers and Clinicians**

Launched in January 2020, Cognitive Vitality Reports is a series of over 200 downloadable assessments from ADDF neuroscientists evaluating available evidence on the risks and benefits of various strategies to promote brain health and prevent not only dementia, but also other age-related brain concerns (e.g., cardiovascular diseases, cancers, diabetes). The reports include evaluations of FDA-approved drugs, drugs in development, herbal supplements and vitamins, foods and drinks, and other non-pharmacologic interventions. These reports allow healthcare professionals to make better-informed decisions about the safety and efficacy of available cognitive health interventions.

### **Credible, Science-Based Strategies**

Our Cognitive Vitality website continues to offer a range of credible, science-based strategies to help people make smarter lifestyle decisions to promote brain health and potentially ward off disease. In 2020, our content also addressed pandemic-related concerns, adding timely blogs covering topics such as “Infection and Cognitive Decline” and “Loneliness

During COVID-19.” Among the significant research we highlighted for patient and practitioner consideration was the latest Lancet Commission report, proposing that targeting 12 risk factors throughout life may delay or prevent up to 40% of dementia cases.

*“Evaluating scientific evidence can be challenging, even for experts. Cognitive Vitality provides simple tools and resources for patients, physicians, and scientists to better understand the latest science-based findings about cognitive health.”*

**Howard Fillit, MD**  
*Founding Executive Director and  
Chief Science Officer*

# THE PROMISE OF RECORD-SETTING SUPPORT

## *Reimagining Efforts to Tell Our Story*

**N**ot even a global pandemic could quell the momentum of the ADDF's ongoing efforts to inspire support for our cause. Without missing a beat, the ADDF community—a team of dedicated donors, volunteers, event chairs, researchers, and staff—came together to create and present novel ways to keep all engaged and informed.

Soon after our Third Annual Hope on the Horizon Luncheon was held in Palm Beach in March, the decision was made to transition all remaining 2020 symposia, luncheons, and fundraising events to a virtual format.

We continued to honor scientific excellence, celebrating the achievements of women scientists as we awarded the Melvin R. Goodes Prize for innovative research to Jerri M. Rook, PhD, of Vanderbilt University, and highlighted the research of Roberta Diaz Brinton, PhD, Director of the University of Arizona's Center for Innovation in Brain Science, at our Tenth Annual Great Ladies Event.

And we were gratified that big name entertainment and sports luminaries, including Co-Founders of Hilarity for Charity, actor and entrepreneur Seth Rogen and screenwriter and director Lauren Miller Rogen, actress Marcia Gay Harden, country music artist Jay Allen, and Washington Capitals team member and Stanley Cup winner T.J. Oshie shared the powerful stories of how Alzheimer's has touched their families at our Third Annual Memories Matter and Tenth Annual Great Ladies events. As in the past, we were privileged that marquee-name journalists, including Andrea Mitchell and ADDF Board of Governors member Paula Zahn, joined forces with us in hosting roles.

*“Memories fuel so much of our greatest work, our proudest accomplishments, and thanks to this community, they help move the world toward better treatment and ultimately a cure for Alzheimer’s.”*

**Paula Zahn**

*Host of the Third Annual Memories Matter Event*

We consistently brought our message directly into homes within our community, building even deeper connections and resulting in an unexpected dividend: incredible generosity from supporters, totaling over \$4 million in contributions to help further Alzheimer's research.



## YOUNG PROFESSIONALS COMMITTEE:

### A NEW GENERATION OF ADVOCATES WORKS TOWARDS A FUTURE WITHOUT ALZHEIMER'S

In 2020, the ADDF watched our base of loyal supporters expand to include a younger generation of professionals in their 20s and 30s who are investing their time and money in the promise of a world without Alzheimer's.

Co-founded by J.P. Morgan private banker Gina Holzheimer and Josh Lauder—grandson of the ADDF's Co-Founder Leonard A. Lauder—the Young Professionals Committee (YPC) hit the ground running in September 2019 and grew throughout 2020 to over 65 members, most with a family connection to the disease. As the group expanded, executive boards were created to help structure and drive fundraising efforts, which brought in over \$100,000 via creative events such as a week of fitness classes promoting the healthy lifestyle associated with a reduced risk of Alzheimer's. In July, YPC members were integrated into the ADDF's Third Annual Memories Matter event, where they shared their own moving stories of loved ones affected by the disease.

*"I started off wanting to be connected because it was a disease my grandfather had...Knowing I'm doing everything I can now to try to find a drug to prevent or slow down Alzheimer's disease is really rewarding."*

**Gina Holzheimer**

Co-Founder, ADDF Young Professionals Committee



The YPC includes young professionals in their  
**20s and 30s**

As of 2020, the YPC has over  
**65 members**

In 2020, their creative fundraising raised over  
**\$100,000**

# CAPTURING THE PROMISE OF OUR 2020 HONOREES



Research Associate Professor at Vanderbilt University's Warren Center for Neuroscience Drug Discovery, **Jerri Rook, PhD**, recipient of the **Melvin R. Goodes Prize** for innovative research at the Eleventh Annual Fall Luncheon and Symposium.



Photographer, humanitarian, and philanthropist **Judy Glickman Lauder**, honoree at the **Third Annual Hope on the Horizon Palm Beach Luncheon**. Top row from left to right: Mark Roithmayr, Heidi McWilliams, Bonnie Lautenberg, Howard Fillit. Bottom row from left to right: Leonard A. Lauder, Judy Glickman Lauder, Nancy Goodes.



Event founders and ADDF board members, **Stephanie Ginsberg** and **Wendy Wilshin**, at the **Third Annual Memories Matter Event**.



Philanthropist, former Chairman of Buckingham Capital Management, and ADDF Board of Governors member **Larry Leeds**, recipient of the **Charles Evans Award** for leadership and advocacy in support of the prevention, treatment, and cure of Alzheimer's disease at the **Eleventh Annual Fall Luncheon and Symposium**.



Founding Executive Chair of the Great Ladies Luncheon, **Elise Lefkowitz**, and her daughter, **Charlie Lefkowitz Crowley**, who surprised her mother with a special tribute at the **Tenth Annual Great Ladies Event**.

# NEW AND CONTINUING PROGRAMS

The programs listed in this section of the report were active within the ADDF's portfolio as of December 31, 2020.

\*Indicates ADDF support of different programs led by the same researcher



## BIOMARKERS

**Biomarkers are tools used to diagnose a disease and assess its progression and response to treatment. These researchers aim to develop more accurate biomarkers for clinical trials.**

Leyla Anderson, MD, PhD, D(ABMLI) NeuroVision Imaging, Inc.	\$539,259.00
Rhoda Au, PhD Trustees of Boston University	\$1,937,857.00
Marta Barrachina, PhD, MBA ADmit Therapeutics S.L.	\$497,652.00
Kaj Blennow, MD, PhD University of Gothenburg	\$500,000.00
Yuval Dor, PhD Hebrew University, Faculty of Medicine	\$500,000.00

Chris Edgar, PhD Cogstate Ltd	\$1,360,000.00
Douglas Galasko, MD University of California, San Diego	\$375,000.00
Sam Gandy, MD, PhD Icahn School of Medicine at Mount Sinai	\$187,069.00
John Gerdes, PhD RIO Pharmaceuticals, Inc. Clinical Phase 0	\$308,869.00
John Harrison Neurotrack Technologies, Inc.	\$792,990.00
Wesley Horton Foundation for the National Institutes of Health, Inc.	\$402,000.00
Foundation for the National Institutes of Health, Inc.*	\$300,000.00
Laura Ibanez, PhD Washington University in St. Louis	\$281,370.00
Clifford Jack, MD Mayo Clinic Rochester	\$499,143.00

<b>Russell Lebovitz, MD, PhD</b> Amprion Inc	\$631,653.00
<b>Cecilia Lee, MD, MS</b> University of Washington	\$498,958.00
<b>Chunlei Liu, PhD</b> Regents of the University of California at Berkeley	\$300,000.00
<b>Franc Llorens</b> CIBERNED-CNB-CSIC	\$228,000.00
<b>Val Lowe, MD</b> Mayo Clinic Rochester	\$347,582.00
<b>Tom MacGillivray, BSc, MSc, PhD</b> University of Edinburgh	\$488,997.00
<b>Saliha Moussaoui, PhD</b> Neurosciences, Master Pharmacochimistry, Certified International Team Leadership, Certified Project Management, Amoneta Diagnostics	\$2,000,000.00
<b>Amber Murray, PhD</b> Biological Dynamics, Inc.	\$1,836,770.00
<b>Gerard Nuovo, MD</b> Gnome Diagnostics, LLC.	\$181,750.00
<b>Rodney Pearlman, PhD</b> Bluefield Project to Cure FTD	\$1,200,000.00
<b>Gregory Penner, PhD</b> NeoNeuro	\$363,000.00
<b>Martin Pomper, MD, PhD</b> Precision Molecular Inc.	\$561,111.00
<b>Ramit Ravona-Springer, MD</b> Medical Research Development and Health Services Fund by the Sheba Medical Center	\$249,810.00

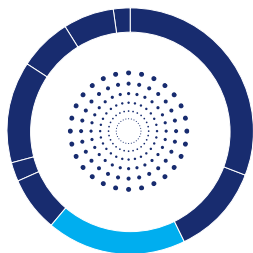
<b>Blaine Roberts, PhD</b> Florey Institute of Neuroscience and Mental Health	\$149,518.00
<b>Eliav Shaked, MSc</b> RetiSpec Inc.	\$500,000.00
<b>Keith St. Lawrence, PhD</b> Lawson Health Research Institute (Affiliated with University of Western Ontario)	\$163,626.00
<b>Judith Steen, PhD</b> Boston Children's Hospital	\$572,678.00
<b>Bruno Steinkraus, PhD</b> Hummingbird Diagnostics GmbH	\$714,812.34
<b>Sidney Strickland, PhD</b> The Rockefeller University	\$320,000.00
<b>Peter Stys, MD</b> University of Calgary	\$293,369.00
<b>Kelly Umana</b> Foundation for the National Institutes of Health, Inc.	\$75,000.00
<b>Samuil Umansky, MD, PhD</b> DiamiR Biosciences	\$492,000.00
<b>Peter van Wijngaarden, MBBS, PhD, FRANZCO</b> Centre for Eye Research Australia	\$420,321.00
<b>Paul Worley, MD</b> Johns Hopkins University	\$160,000.00
<b>Guoliang Xing, PhD</b> The Chinese University of Hong Kong	\$641,204.00
<b>Kevin Yarasheski, PhD</b> C2N Diagnostics	\$2,225,237.00
<b>Henrik Zetterberg, MD, PhD</b> University of Gothenburg	\$3,197,896.00



## GENETICS & EPIGENETICS

These therapies target genetic risk factors like APOE and epigenetics, which regulate how much genes are expressed.

Miles Berger, MD, PhD Duke University Clinical Phase 2	\$1,631,197.00
Roger Bullock, PhD, BA, MA Oryzon Genomics S.A. Clinical Phase 2	\$1,500,000.00
Ronald Crystal, MD LEXEO Therapeutics* Clinical Phase 2	\$1,977,336.00
Weill Medical College of Cornell University	\$3,006,472.00
Kent Leslie Amylyx Pharmaceuticals, Inc. Clinical Phase 2	\$928,234.00
Hussein Yassine, MD University of Southern California Clinical Phase 2	\$1,500,000.00

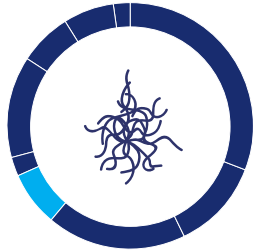


## INFLAMMATION

These scientists are investigating drugs that protect against inflammation in the brain caused by disease and injury, which can accelerate or trigger Alzheimer's.

Kevin Hodgetts, PhD Laboratory for Drug Discovery in Neurodegeneration (LDDN)	\$600,000.00
Sharon Inouye, MD, MPH Hebrew SeniorLife	\$1,069,609.00
Masashi Kitazawa, PhD University of California, Irvine	\$328,000.00
Krista Lanctôt, PhD Sunnybrook Research Institute Clinical Phase 2	\$1,396,867.00
John Olichney, MD University of California at Davis	\$1,034,991.00
Michael Parker, DPhil, FAA, FAHMS St. Vincent's Institute of Medical Research	\$345,754.00
Erik Roberson, MD, PhD University of Alabama at Birmingham	\$660,000.00
Marwan Sabbagh, MD Cleveland Clinic Lou Ruvo Center for Brain Health Clinical Phase 2	\$1,396,475.00
Eric Siemers, MD Vaccinex Inc. Clinical Phase 1	\$2,992,766.00
Edward Spack, PhD Therini Bio	\$3,000,000.00
Meredith Upton Foundation for the National Institutes of Health, Inc.	\$100,000.00
Linda Van Eldik, PhD University of Kentucky Research Foundation Clinical Phase 1	\$1,434,160.00

Manfred Windisch, PhD  
 Neurokine Therapeutics  
 Clinical Phase 1 \$1,688,985.00



**MISFOLDED PROTEINS**  
 These scientists are pursuing approaches to prevent or clear the accumulation of misfolded proteins, which causes damage to brain cells.

Dirk Beher, PhD  
 Asceneuron SA  
 Clinical Phase 1 \$2,200,000.00

Travis Dunckley, PhD  
 Arizona State University Foundation \$224,753.00  
 Arizona State University Foundation\* \$26,401.00

Luana Fioriti, PhD  
 Plico Biotech Inc. \$148,000.00

Edward Huey, MD  
 Trustees of Columbia University in the City of New York  
 Clinical Phase 2 \$532,335.00

Christopher Hulme, PhD  
 University of Arizona \$99,964.00

Janice Kranz, PhD  
 Eikonizo Therapeutics, Inc.  
 Clinical Phase 0 \$1,001,051.00

Thomas Kukar, PhD  
 Emory University \$150,000.00

Raymond Turner, MD, PhD  
 Georgetown University  
 Clinical Phase 2 \$2,104,000.00



**MITOCHONDRIA & METABOLIC FUNCTION**  
 As we age, mitochondria, the energy centers of our cells, can become impaired. These researchers are developing drugs targeting this dysfunction.

Paul Edison, MD, MRCP, PhD, FRCPI  
 Imperial College London  
 Clinical Phase 2 \$458,000.00  
 Imperial College London\* \$340,540.00

Gary Gibson, PhD  
 Winifred Masterson Burke Medical Research Institute  
 Clinical Phase 2 \$250,000.00

Eugenia Trushina, PhD  
 Mayo Clinic Rochester \$600,000.00  
 Mayo Clinic Rochester\* \$600,000.00



**NEUROPROTECTION**  
 As Alzheimer's progresses, neurons (or nerve cells) lose their connections and begin to die, causing the loss of memory and other cognitive functions. These scientists are exploring "neuroprotective" treatment strategies to shield neurons from damage and death.

Roberta Diaz Brinton, PhD  
 University of Arizona  
 Clinical Phase 2 \$450,000.00  
 University of Arizona\* \$150,000.00

<b>Susan Catalano, PhD</b> Cognition Therapeutics, Inc. Clinical Phase 2	\$2,000,000.00
<b>Thomas Franke, MD, PhD</b> Icahn School of Medicine at Mount Sinai	\$233,505.11
<b>Dimitrios Kapogiannis, MD</b> National Institute on Aging	\$336,432.00
<b>Leen Kawas, PhD</b> Athira Pharma Inc. Clinical Phase 1	\$1,397,630.00
<b>Frank Longo, MD, PhD</b> Pharmatrophix Clinical Phase 2	\$500,000.00
<b>William Ray, PhD</b> The Neurodegeneration Consortium, MD Anderson	\$538,620.00
<b>Emiliano Santarnecchi, PhD</b> Harvard Medical School/BIDMC Clinical Phase 2	\$1,959,841.00
<b>Grace Stutzmann, PhD</b> NeuroLucent, Inc. RFUMS/Chicago Medical School*	\$338,985.00 \$257,942.00
<b>Ronald van der Geest, PhD</b> Treeway B.V. Clinical Phase 2	\$2,994,122.57
<b>John "Kent" Werner, MD, PhD</b> Cogentis Therapeutics	\$188,193.00
<b>Yan Zhang, PhD</b> The University of Texas at Austin	\$350,000.00



## SYNAPTIC ACTIVITY & NEUROTRANSMITTERS

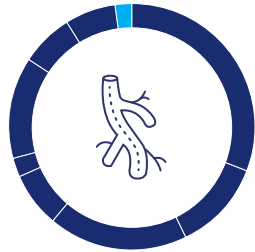
Neurotransmitters carry signals across synapses, which are connections between neurons. These processes are critical for memory and cognition.

<b>Jeffrey Cummings, MD</b> Cleveland Clinic Lou Ruvo Center for Brain Health Clinical Phase 2	\$1,000,000.00
Cleveland Clinic Lou Ruvo Center for Brain Health*	\$24,300.92
<b>Michela Gallagher, PhD</b> AgeneBio Inc. Clinical Phase 3	\$150,000.00
<b>Wesley Horton</b> Foundation for the National Institutes of Health, Inc.	\$300,000.00
<b>Giacomo Koch, MD, PhD</b> Santa Lucia Foundation Clinical Phase 2	\$602,800.00
Santa Lucia Foundation*	\$250,000.00
<b>Chien-liang Lin, PhD</b> Ohio State University	\$795,235.00
<b>Alexandros Makriyannis, PhD</b> Northeastern University	\$250,000.00
<b>Paul Newhouse, MD</b> Vanderbilt University Clinical Phase 2	\$1,271,174.00
Vanderbilt University*	\$539,798.53
<b>Ana Pereira, MD</b> Icahn School of Medicine at Mount Sinai Clinical Phase 2	\$106,000.00



Sharon Rosenzweig-Lipson, PhD  
 AgeneBio Inc. \$499,704.00

Jerri Rook, PhD  
 Vanderbilt University \$150,000.00



**VASCULAR**

Healthy blood flow is essential for providing neurons with sufficient oxygen and vital nutrients. These researchers are targeting vascular damage to improve brain function.

Sandra Black, MD, FRCP(C)  
 Sunnybrook Research Institute, University of Toronto  
 Clinical Phase 2 \$450,000.00

Atticus Hainsworth, PhD  
 St. George's University of London  
 Clinical Phase 2 \$464,992.00

Ihab Hajjar, MD, MS  
 Emory Univeristy  
 Clinical Phase 2 \$973,777.00



**OTHER**

Dieter Edbauer, MD  
 German Center for Neurodegenerative Diseases \$300,000.00

Kejal Kantarci, MD, MS  
 Mayo Clinic Rochester \$87,714.00

Riccardo Miotto, PhD  
 Icahn School of Medicine at Mount Sinai \$100,000.00

Miranda Orr, PhD  
 Wake Forest University Health Sciences  
 Clinical Phase 2 \$3,000,000.00

Irina Pikuleva, PhD  
 Case Western Reserve University  
 Clinical Phase 2 \$197,475.00

Hiroaki Sato, MD, PhD  
 McGill University  
 Clinical Phase 2 \$782,461.00

Phillip Tully, PhD, MPsych, BHSc  
 University of Adelaide \$99,363.00

Bruno Vellas, MD  
 Toulouse Centre of Excellence in Neurodegeneration,  
 University Hospital Toulouse  
 Clinical Phase 2 \$300,000.00

George Vradenburg  
 UsAgainstAlzheimer's Network \$1,000,000.00

Kristine Yaffe, MD  
 The Regents of the University of California, San Francisco \$100,000.00

**\$88,110,456.47**  
**TOTAL SUPPORT FOR NEW AND CONTINUING PROGRAMS**

# OUR SUPPORTERS

We are deeply grateful to all those who supported our work in 2020. Your generosity gives us hope for a future without Alzheimer's disease.

## \$1,000,000 AND ABOVE

Anonymous (2)  
Association for Frontotemporal Degeneration  
Jeffrey Bezos  
Dagmar Dolby Fund  
Foundation for a Better World  
Gates Ventures  
Judy and Leonard A. Lauder  
MacKenzie Scott

## \$500,000–\$999,999

Charles and Helen Schwab Foundation  
Edward Goodnow  
Jo Carole and Ronald S. Lauder

## \$250,000–\$499,999

Anonymous  
Lattner Family Foundation  
The Lauder Foundation  
Melvin R. Goodes Family Foundation

## \$100,000–\$249,999

Roslyn Goldstein  
Nancy and Melvin R. Goodes  
Frances and Nathan Kirsh  
Laurence C. Leeds, Jr.  
Susan and Thomas Lowder  
The Ludwig Family Foundation  
Michael and Catherine Podell  
Ray and Kay Eckstein Charitable Trust  
Samuel I. Newhouse Foundation, Inc.  
Lizabeth Furman Sandler and Randal Sandler  
The Joan G. Toepfer Charitable Trust  
Tuchman Family Foundation  
Carolyn and Malcolm Wiener

## \$50,000–\$99,999

Anonymous  
A.P. Kirby, Jr. Foundation, Inc.  
Carol and Jack Aten  
Caryn J. Clayman  
The Eranda Rothschild Foundation  
Estate of Evelyn H. Lauder  
Mitchell Kaneff  
Kate and John Krehbiel

William P. Lauder  
Laura and Gary Lauder  
Jane Lauder and Kevin Warsh  
Elise and Marc Lefkowitz  
Margaret and Daniel Loeb  
Michelle MacDonald  
Melvin and Estelle Gelman Foundation  
Anne and J. Christopher Reyes  
Caroline Fitzgibbons and Thomas Smith  
The Krehbiel Family Foundation  
David R. Weinreb  
William Wright Family Foundation  
Wendy Wilshin and Ronald Dickerman

## \$25,000–\$49,999

Anonymous  
A G Foundation  
Hope and Marc Altheim  
Beacon Investment Advisory Services  
Bloomberg Philanthropies  
Carol Seabrook Boulanger  
Joan and Ed Doherty  
Cynthia Breen and Laurie Dowley  
Eli Lilly and Company  
Bonnie Englehardt Lautenberg  
The Estée Lauder Companies Inc.  
Jacalyn and Joel Florin  
Stephanie and Ian Ginsberg  
Agnes Gund  
The Harmes C. Fishback Foundation Trust  
Rose Marie Bravo and William Jackey  
Janet Prindle Seidler Foundation  
Cherry and Howard Kaneff

Randi and Clifford Lane  
Marsha Z. and Henry Laufer  
Lois & Andrew Zaro Family Charitable Trust  
Andrea and Jeffrey Lomasky  
Louis J. and June E. Kay Foundation  
Nancy and Howard Marks  
Nucor Construction Corp.  
Julie Chrystyn Opperman  
Lauren and Timothy Oshie  
Thomas Pheasant  
Sharon and Robert Prince  
Lori and John Reinsberg  
Peggy Rice  
Lois Robbins and Andrew Zaro  
E. John Rosenwald  
Thomas Scanlan  
Janet and Charles Seidler  
Paulette and Ron Sherrill  
Iris Smith  
Debbie and Craig Stapleton  
TD Ameritrade Clearing  
TrueU Inc. - Super Service Challenge  
Carol and Michael Weisman  
Janice Willinger and Robert Spiegel  
Paula Zahn and Paul Fribourg

## \$10,000–\$24,999

Anonymous (3)  
Albert B. Glickman Family Foundation  
Amy Baier  
Shelley and Robert Banks  
Ruth Baum  
Judy and Howard Bernick  
Daniel S. Bernstein  
Michele Beyer  
Leslie Bhutani

Lynn and Wolf Blitzer  
Faith Bobrow  
Charles Bronfman  
Henry Buhl  
James Buller  
Ron Burkle  
Linda and Arthur Carter  
Kristin and John Cecchi  
Clifford Chance US LLP  
Neil Cohen  
Ryna & Melvin Cohen Family Foundation Inc.  
Colliers International  
Gina and Kurt Conti  
Crown Equipment Corporation  
James and Janet Dicke  
Annette and Mitchell Eichen  
Ernst & Young LLP  
Mary C. Farrell  
Jerald D. Fessenden  
Foerster Bernstein Foundation  
Marilyn and Sam Fox  
Richard I. Furman  
Paul and Elizabeth Greenbaum  
Philip M. Gross  
Audrey and Martin Gruss  
Dena Henry  
Lawrence Herbert  
Ronnie F. Heyman  
Howard Gilman Foundation  
Jane Hertzmark Hudis and Clifford Hudis  
Hues for You, LLC  
Jones Lang LaSalle America Inc.  
JP Morgan Chase  
Katherine Kamen  
Barbara and Ron Kaufman

Eileen Kim  
 KLD Foundation  
 David H. Komansky  
 John Krehbiel  
 Deborah M. Krulewitch  
 Judy Lauder  
 Carole Cooper and Richard Leibner  
 Sheri and Seth Leist  
 Ellen Levy  
 Beatrice Liu and Philip Lovett  
 Madison International Realty  
 Marlene Malek  
 Carlyn McCaffrey  
 Julie Medler  
 Millicent and Robert Monks  
 MorseLife Health System, Inc.  
 Jennifer Myerberg  
 Alicia Nussdorf  
 Mary and Carl Panattoni  
 Susan and Alan Patricof  
 Michael J. Pierce  
 Daniel Prince  
 Cobey Rapaport  
 Sharon and Daniel Roitman  
 Michael Romanoff  
 Romanoff Equities Inc.  
 Sharon T. Sager  
 Richard E. Salomon  
 Dale Schenk  
 Diane and John Sculley  
 Trish and Steven Shapiro  
 Donald Sherrill  
 Glenn Sherrill  
 Klara and Larry Silverstein  
 Beverly Sommer  
 Toni and Martin Sosnoff

Katherine Farley and Jerry Speyer  
 Cindy and Laurence Tell  
 Richard Thall  
 The Buller Foundation  
 The Howard B. Bernick Foundation  
 Tishman Speyer Properties, LP  
 Barbara Tober  
 The Toma Family  
 Timothy W. Turner  
 UsAgainstAlzheimer's Network  
 Mary and Kenneth H. Walker  
 Lorraine and Christopher Wallace

Jeffrey Assaf  
 Peter Banks  
 Lisa and Clifford Beek  
 The Berro Family Foundation Inc.  
 Margaret Bewkes  
 Evelyn T. Brandt  
 Laura Louise Breyer  
 Estrellita and Daniel Brodsky  
 Bettina and Donald Bryant  
 The Bynum Family Foundation  
 Lynda and F. Davis Camalier  
 Clark Enterprises, Inc.

GGT Flagler Limited Partnership, LLC  
 G-III Leather Fashions, Inc.  
 Beth and James Glassman  
 Ronald Gold  
 Alison Grann  
 Allison and Robert Grigg  
 HCMC Inc.  
 Heart of Neiman Marcus Foundation Fund  
 Thomas Hilfiger  
 Ann W. Jackson  
 Amy and Scott Jaffee

Allison and Howard Lutnick  
 The Marc Haas Foundation  
 Morris Mark  
 David H. McCormick  
 David Moscow  
 Linda and Sidney Moskowitz  
 Night Owl Capital Management LLC  
 Melanie and Lawrence Nussdorf  
 Pamela and Edward Pantzer  
 Charles and Donna Reilly  
 David Reis  
 Denise Rich  
 Paula Robinson  
 Ronald Rosner  
 Janet C. Ross  
 Sacks & Sacks LLP  
 Roger W. Sant  
 Edith and Gerald Schaeffer  
 June and Paul Schorr  
 Shana Alexander Charitable Foundation  
 Stuart Sherrill  
 Barbaralee Diamonstein-Spielvogel and Carl Spielvogel  
 The Whittier Trust Company  
 Nikola Theo  
 UBS Private Wealth Management  
 Ann and Thomas Unterberg  
 Sara and John Walsh

*“Thank you to the ADDF... for your ongoing support of drug discovery. The bench-to-bedside journey is complicated and challenging, but new doors are opening for research and science as philanthropic groups like the ADDF become more involved in the process.”*

**Jerri M. Rook, PhD**  
 Recipient, Melvin R. Goodes Prize

Ross P. Waller  
 Tamara Watkins  
 Sandra E. Wegman  
 Janice Worth  
 Alison and Boniface Zaino  
**\$5,000–\$9,999**  
 William Acquavella  
 Yousef Al Otaiba  
 Bettina Anderson  
 Roger Anderson  
 Shari and Jeff Aronson

Joyce Cowin  
 CustomInk LLC  
 Daniell Family Foundation  
 Ellen Davin  
 John D. Demsey  
 Cindy and Glen Edelman  
 Susan Efron  
 Peter Engel  
 First Republic Bank  
 Julie Garcia  
 George Gardner Monks Foundation  
 David Gerson

Kiera and Christopher Johnson  
 Christopher and Vicki Kellogg  
 Kelsey Family Foundation  
 Eleanora R. Kennedy  
 Al W. King  
 George Klett  
 Diana Kogan and Israel Kogan  
 Elyse Kroll  
 Dana and Michael Landow  
 Linda and Steven Levy  
 Sharon Handler-Loeb and John Loeb  
 LoveShackFancy

## LEADERSHIP

# BOARD OF GOVERNORS

The Board of Governors is the principal board of the Corporation with all legal power and authority to manage, oversee, and make decisions regarding the ADDF's programs and activities. Board members include leaders from government, industry, and the research community, who serve as ambassadors for the ADDF and provide strategic oversight and counsel.

*All members as of December 31, 2020.*

### ADDF HONORARY CHAIR (RETIRED)

**Justice Sandra Day O'Connor**  
Associate Justice, US Supreme Court

### CO-CHAIRS

**Leonard A. Lauder**  
Chairman Emeritus, The Estée Lauder Companies Inc.

**Ronald S. Lauder**  
Chairman, Clinique Laboratories, LLC

### CO-VICE CHAIR AND SECRETARY

**Randal Sandler**  
Director of Client Services and Marketing, Bridgewater Associates

### EX OFFICIO

**Howard Fillit, MD**  
Founding Executive Director and Chief Science Officer

### CO-VICE CHAIR AND TREASURER

**Thomas F. McWilliams**  
Private Investor

### GOVERNORS

**Robert Belfer**  
Chairman, Belfer Management

**Roberta Diaz Brinton, PhD**  
Inaugural Director of the Center for Innovation in Brain Science at the University of Arizona, Professor of Pharmacology and Neurology in the College of Medicine, Tucson

**Nancy Corzine**  
President and CEO, Nancy Corzine Inc.

**Lanny Edelsohn, MD**  
Director, Christiana Care Health Systems, Inc.

**Bonnie Pfeifer Evans**  
Senior Sales Associate, Corcoran Group Real Estate; Co-Trustee, The Charles Evans Foundation

**Melvin R. Goodes\***  
Former Chairman and CEO, Warner-Lambert

**Nancy Goodes**  
Former Executive, Nazareth-Century Mills; Secretary, Melvin R. Goodes Family Foundation, Inc.

**Gary M. Lauder**  
Managing Director, Lauder Partners LLC

**Laurence C. Leeds, Jr.**  
Chairman, Buckingham Capital Management, Inc.

**Richard C. Mohs, PhD**  
Global Alzheimer's Platform Foundation

**Beatriz Illescas Putzeys-Claugus**  
Educator, Sworn Translator, Diplomat, Philanthropist, Founder of The Foundation for a Better World

**Sharon T. Sager, CIMA**  
Managing Director and Private Wealth Advisor, UBS Private Wealth Management

**Alice Shure**  
Founder and Producer, AMICI Productions LLC; Co-Trustee, The Charles Evans Foundation

**Sally Susman\***  
Executive Vice President, Policy, External Affairs and Communications, Pfizer Inc.

**David R. Weinreb**  
Chief Executive Officer, Weinreb Ventures

*\*Denotes Honorary Members*

## LEADERSHIP

# BOARD OF OVERSEERS

The Board of Overseers is an advisory body committed to providing counsel and support to the ADDF Board of Governors and staff. Overseers lend their expertise to advance the ADDF's mission to accelerate the discovery of drugs to prevent, treat, and cure Alzheimer's disease. Overseers are appointed by and serve at the pleasure of the Board of Governors.

*All members as of December 31, 2020.*

### CHAIR

**Sharon T. Sager, CIMA**

Managing Director and Private Wealth Advisor,  
UBS Private Wealth Management

### OVERSEERS

**Carol Seabrook Boulanger**

Partner, Pillsbury, Winthrop, Shaw, and Pittman, LLP

**Charles Cangro**

Principal, Personal Financial Services,  
Ernst & Young, LLC (Retired)

**Mitchell D. Eichen, J.D., LL.M.**

Founder and Chief Executive Officer,  
Acertus Capital Management  
Founder and Chief Executive Officer,  
The MDE Group

**Stephanie Ginsberg**

Volunteer, Philanthropist; Founder, BCRF Pink Promises  
Benefit

**Allan M. Green, MD, PhD, JD**

Allan M. Green Esq., LLC

**Christopher Johnson**

President, Rackson Companies

**Mitchell Kaneff**

Chairman and CEO, Arkay Packaging

**Bonnie Englebardt Lautenberg**

Photographer and Writer, Bonnie Lautenberg Designs

**Elise Gelman Lefkowitz**

Philanthropist

**Philip Lovett**

Founding Partner, Millennium Partners

**Julie Medler**

Managing Director, Golden Seeds

**Justin Meltzer**

Real Estate Operations, DLA Piper LLP

**Pamela J. Newman, PhD**

President and Chief Executive Officer, PJN Strategies

**Phebe Farrow Port**

Senior Vice President, Global Management Strategies  
and Chief of Staff, Executive Management Initiatives,  
The Estée Lauder Companies Inc.

**Gregory A. Rosica**

Partner, Tax, Ernst & Young, LLC

**Tom Scanlan**

Consultant, Spencer Stuart

**John H. Scully, CIMA**

Senior Managing Director, Head of Private Wealth  
Advisory, Nuveen Investments

**Stephen Toma**

Managing Director, VJMS, LLC

**Wendy L. Wilshin**

Founder and Principal, WLW Designs

# 2020 FINANCIAL OVERVIEW

\*Full audited 2020 financials available by request

## STATEMENT OF FINANCIAL POSITION

ASSETS	2019	2020
Cash & cash equivalents	\$ 31,201,758	9,749,518
Investments, at fair value	43,655,426	76,370,497
Contributions receivable	22,155,205	11,255,768
Other assets	163,175	5,940
<b>Total Assets</b>	<b>97,175,564</b>	<b>97,381,723</b>
<b>LIABILITIES &amp; NET ASSETS</b>		
<b>Liabilities</b>		
Accounts payable & accrued liabilities	215,799	82,515
Grants payable	46,629,104	47,599,968
Due to Institute for the Study of Aging, Inc.	5,362	402,676
Deferred revenue	108,331	16,000
<b>Total liabilities</b>	<b>46,958,596</b>	<b>48,101,159</b>
<b>Net Assets</b>		
Without donor restrictions	22,108,235	22,219,906
With donor restrictions	28,108,733	27,060,658
<b>Total net assets</b>	<b>50,216,968</b>	<b>49,280,564</b>
<b>Total liabilities &amp; net assets</b>	<b>\$ 97,175,564</b>	<b>97,381,723</b>

## STATEMENT OF ACTIVITIES

CHANGE IN NET ASSETS	2020			2019
	Without Donor Restrictions	With Donor Restrictions	Total	Total
<b>Support &amp; Revenues</b>				
<i>Support:</i>				
Contributions & grants	\$ 3,944,505	15,717,622	19,662,127	15,503,131
Contributions of in-kind services from the Institute for the Study of Aging, Inc.	3,363,452	—	3,363,452	4,016,995
Proceeds from special events, net of direct expenses	1,887,157	—	1,887,157	3,944,614
Net assets released from restrictions	16,756,656	(16,756,656)	—	—
<i>Revenues:</i>				
Grant returns	4,836,527	(9,041)	4,827,486	2,242,101
Conference registration fees & other income	23,966	—	23,966	74,504
Investment Income	914,769	—	914,769	948,041
<b>Total support &amp; revenues</b>	<b>31,727,032</b>	<b>(1,048,075)</b>	<b>30,678,957</b>	<b>26,729,386</b>
<b>Expenses</b>				
<i>Program services:</i>				
Grants	30,869,812	—	30,869,812	30,307,505
Unexecuted prior year grants	(6,068,743)	—	(6,068,743)	—
Other	4,257,402	—	4,257,402	3,211,623
<b>Total program services</b>	<b>29,058,471</b>	<b>—</b>	<b>29,058,471</b>	<b>33,519,128</b>
<i>Support services:</i>				
Fundraising	1,421,435	—	1,421,435	1,721,880
Management & general	1,135,455	—	1,135,455	1,205,291
<b>Total supporting services</b>	<b>2,556,890</b>	<b>—</b>	<b>2,556,890</b>	<b>2,927,171</b>
<b>Total expenses</b>	<b>31,615,361</b>	<b>—</b>	<b>31,615,361</b>	<b>36,446,299</b>
<b>Change in net assets</b>	<b>111,671</b>	<b>(1,048,075)</b>	<b>(936,404)</b>	<b>(9,716,913)</b>
<b>Net assets, beginning of year</b>	<b>22,108,235</b>	<b>28,108,733</b>	<b>50,216,968</b>	<b>59,933,881</b>
<b>Net assets, end of year</b>	<b>\$ 22,219,906</b>	<b>27,060,658</b>	<b>49,280,564</b>	<b>50,216,968</b>

# 100%

## *OF YOUR DONATION FUNDS SCIENCE*

All fundraising and management expenses are underwritten by our founders, so your entire donation funds innovative science.

***We're proud to hold GuideStar's  
Platinum charity rating.***



# *INSPIRING CHANGE CAPTURING PROMISE*

2020 ANNUAL REPORT



Alzheimer's  
**Drug Discovery**  
Foundation

Founded in 1998 by Leonard A. Lauder and Ronald S. Lauder, the Alzheimer's Drug Discovery Foundation (ADDF) is the only philanthropy solely focused on accelerating the development of drugs to prevent, treat, and cure Alzheimer's disease. Its venture philanthropy approach and scientific expertise allows the ADDF to support the most promising ideas around the world. And 100% of your donation funds innovative science.

To learn more, visit [AlzDiscovery.org](https://www.alzdiscovery.org)

**Alzheimer's Drug Discovery Foundation**

57 West 57th, Suite 904 • New York, NY 10019 • (212) 901-8000 • [info@AlzDiscovery.org](mailto:info@AlzDiscovery.org)